



## ***U-series ages and morphology of a Quaternary large-volume travertine deposit at Mesa del Oro, NM: Implications for paleohydrology, paleoclimate, and neotectonic processes***

A. Priewisch, L. J. Crossey, and K. E. Karlstrom  
2013, pp. 229-237. <https://doi.org/10.56577/FFC-64.229>

in:  
*Geology of Route 66 Region: Flagstaff to Grants*, Zeigler, Kate; Timmons, J. Michael; Timmons, Stacy; Semken, Steve, New Mexico Geological Society 64<sup>th</sup> Annual Fall Field Conference Guidebook, 237 p.  
<https://doi.org/10.56577/FFC-64>

---

*This is one of many related papers that were included in the 2013 NMGS Fall Field Conference Guidebook.*

---

### **Annual NMGS Fall Field Conference Guidebooks**

Every fall since 1950, the New Mexico Geological Society (NMGS) has held an annual [Fall Field Conference](#) that explores some region of New Mexico (or surrounding states). Always well attended, these conferences provide a guidebook to participants. Besides detailed road logs, the guidebooks contain many well written, edited, and peer-reviewed geoscience papers. These books have set the national standard for geologic guidebooks and are an essential geologic reference for anyone working in or around New Mexico.

### **Free Downloads**

NMGS has decided to make peer-reviewed papers from our Fall Field Conference guidebooks available for free download. This is in keeping with our mission of promoting interest, research, and cooperation regarding geology in New Mexico. However, guidebook sales represent a significant proportion of our operating budget. Therefore, only *research papers* are available for download. *Road logs*, *mini-papers*, and other selected content are available only in print for recent guidebooks.

### **Copyright Information**

Publications of the New Mexico Geological Society, printed and electronic, are protected by the copyright laws of the United States. No material from the NMGS website, or printed and electronic publications, may be reprinted or redistributed without NMGS permission. Contact us for permission to reprint portions of any of our publications.

One printed copy of any materials from the NMGS website or our print and electronic publications may be made for individual use without our permission. Teachers and students may make unlimited copies for educational use. Any other use of these materials requires explicit permission.

*This page is intentionally left blank to maintain order of facing pages.*

# U-SERIES AGES AND MORPHOLOGY OF A QUATERNARY LARGE-VOLUME TRAVERTINE DEPOSIT AT MESA DEL ORO, NM: IMPLICATIONS FOR PALEOHYDROLOGY, PALEOCLIMATE, AND NEOTECTONIC PROCESSES

A. PRIEWISCH, L. J. CROSSEY, AND K. E. KARLSTROM,

Earth and Planetary Sciences, University of New Mexico, Albuquerque, NM 87131, alexandra.priewisch@gmail.com

**ABSTRACT**—This paper describes a large-volume travertine deposit that formed at the northeastern end of Mesa del Oro, a basalt mesa located at the southwestern edge of the Colorado Plateau and along the Jemez lineament. The travertine deposit forms two topographically elevated platforms that cover an area of 27 km<sup>2</sup>, are up to 63 m thick, and have a calculated volume of 0.7 km<sup>3</sup>. We report six new dates for the Mesa del Oro accumulation and show that travertine formation occurred in two main intervals, 360-250 ka and 760-560 ka. The intervals overlap with episodes of basaltic volcanism in the area. The northern platform was deposited along a fissure ridge and an associated marsh as shown by both travertine morphology and facies. Large-volume travertine formation requires both high CO<sub>2</sub> influx and significant groundwater discharge. The high CO<sub>2</sub> influx is interpreted to be related to the episodic volcanic activity that produced over-pressuring of the CO<sub>2</sub>/groundwater system with magmatic gasses. Intervals of high groundwater discharge are attributed to high head in a confined aquifer achieved through increased recharge and thus, episodes of travertine formation at Mesa del Oro are interpreted to record wet paleoclimate periods.

## INTRODUCTION

Travertines are groundwater discharge deposits made of calcite or aragonite that precipitate from CO<sub>2</sub>-rich groundwater. Travertine deposits are common throughout New Mexico (Fig. 1; Barker et al., 1996) and are generally well-preserved due to the resistance of carbonate to erosion in the arid climate. They predominantly occur along the Rio Grande rift flanks and on the Colorado Plateau along the Jemez lineament (Fig. 1). Here we describe a large-volume travertine deposit at Mesa del Oro, a Tertiary basalt-capped mesa located near the southeastern boundary of the Colorado Plateau and along the Jemez lineament, about 30 km south of I-40 and to the west of the Lucero uplift (Fig. 2). The travertine deposit formed between two basalt flows, at the northeastern end of the Mesa del Oro basalts (Jicha, 1958) and south of a second basalt flow that flowed north from Volcano Hill vent (Fig. 2). The travertine occurs in two connected platforms, herein called the northern and southern platforms (Fig. 3). The travertine overlies Triassic Chinle Formation and, at the northwestern edge, Cenozoic basalt (Fig. 3). The travertine at Mesa del Oro was mentioned and mapped by Wright (1946), and discussed in detail by Jicha (1958) who also mapped the southern platform. The northern platform has been quarried to a minor extent by NZ Legacy LLC and is well-known among cavers for its Pronoun Caves (Forbes and Stephens, 1994). The travertine-precipitating groundwater at Mesa del Oro, although no longer active, is inferred to have issued from springs along fault-related fissures which lead to the formation of a fissure ridge on the northern platform (Fig. 3; Chafetz and Folk, 1984; Pentecost, 2005; Brogi

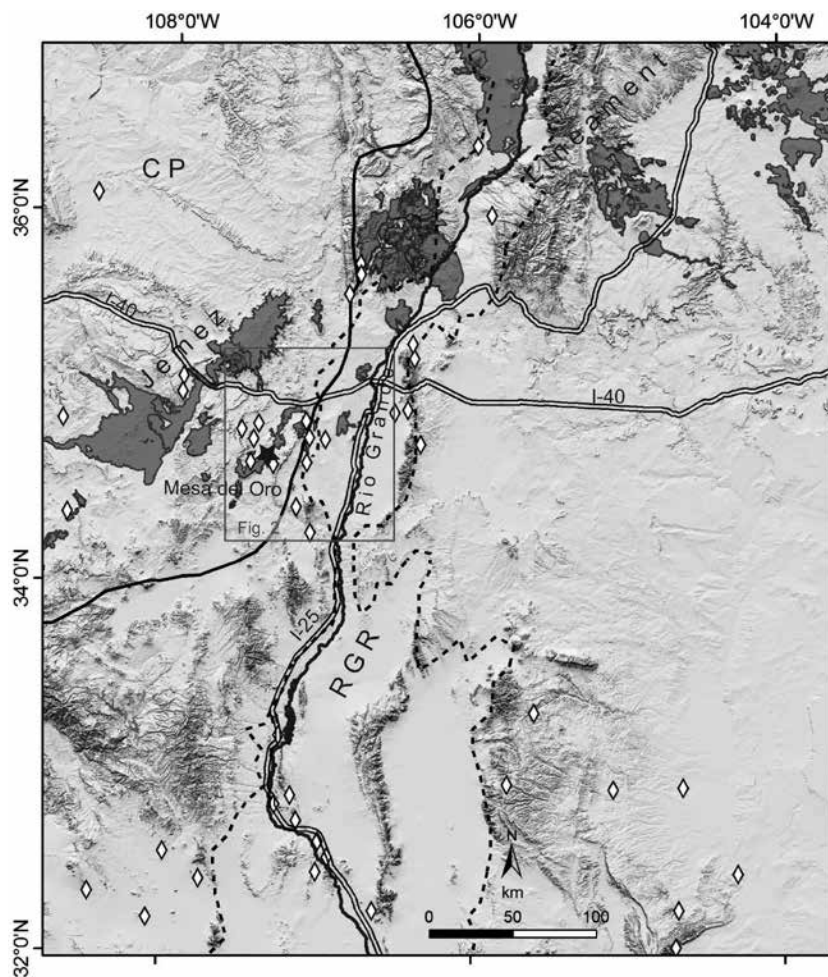


FIGURE 1. Shaded relief map of New Mexico showing locations of travertine accumulations (white diamonds; Barker et al., 1996), the large-volume travertine deposit at Mesa del Oro (black star; this study), late Cenozoic volcanics (dark grey areas outlined in black), and associated tectonic features such as the Rio Grande rift (RGR, dashed black line), Colorado Plateau (CP, solid black line), and Jemez lineament. The box indicates the area of interest.

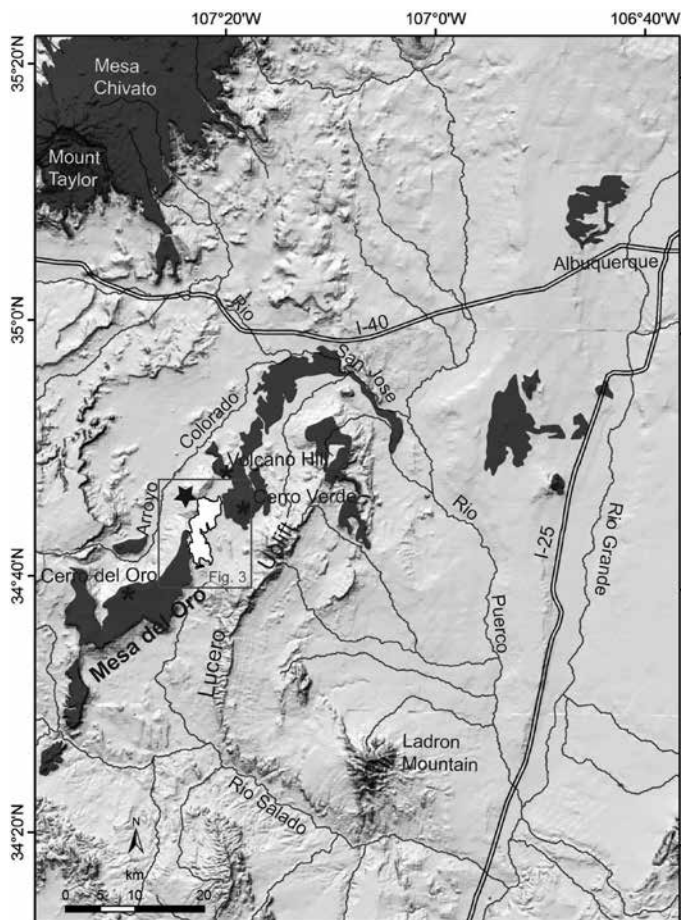
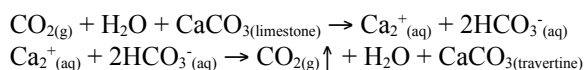


FIGURE 2. Shaded relief map showing the large-volume travertine deposit at Mesa del Oro (black star, outlined in black). Also shown are late Cenozoic volcanics (dark grey areas outlined in black), and volcanic vents (black asterisks). The box indicates the study area.

and Capezuoli, 2009). Travertine can be dated with the precise U-series method and because the deposits are well-preserved in the landscape they provide a powerful tool for understanding paleohydrology, paleoclimate, and neotectonic processes (Glover and Robertson, 2003; Faccenna et al., 2008; Crossey et al., 2011; De Filippis et al., 2012; Kampman et al., 2012). In this paper, we report new results for travertine morphologies and facies at Mesa del Oro, six new travertine ages and associated volumes, and implications for paleohydrology, paleoclimate, and neotectonics.

## BACKGROUND ON TRAVERTINE AND TRAVERTINE FORMATION

Travertines are fresh-water carbonates that precipitate at springs and along streams due to the degassing of  $\text{CO}_2$  from groundwater that is supersaturated with respect to calcium carbonate (Pentecost, 2005; Crossey et al., 2006):



Travertine deposits usually occur along faults that are conduits for  $\text{CO}_2$ -charged groundwater (Hancock et al., 1999), and the

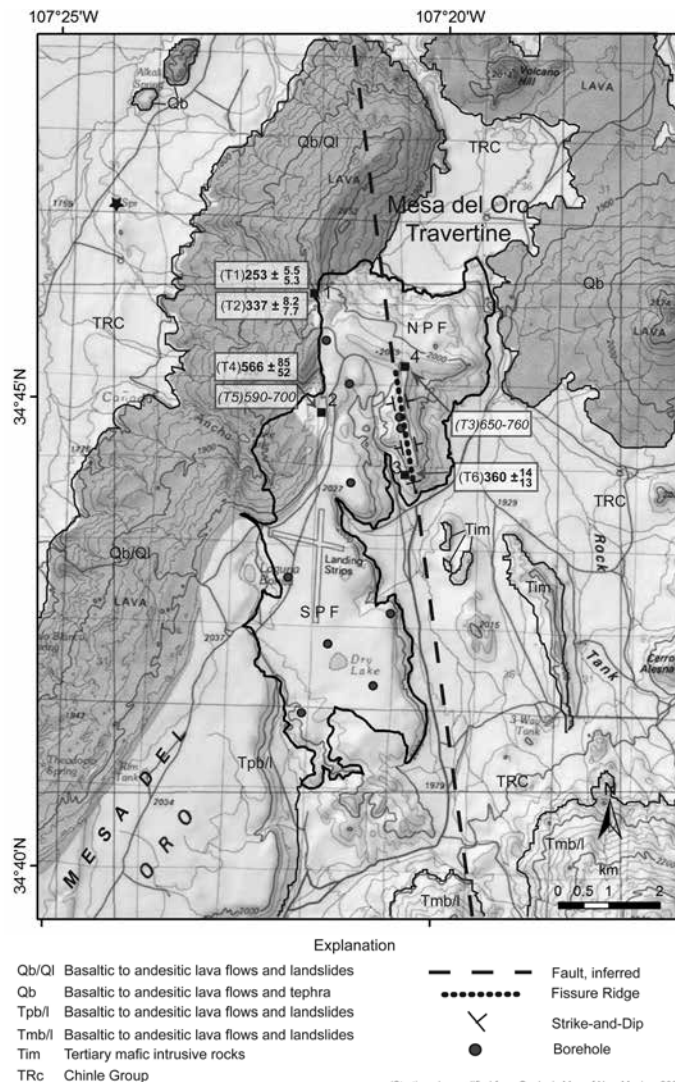


FIGURE 3. Topographic map showing the extent of the large-volume travertine deposit at Mesa del Oro (outlined in black), with its two platforms: northern platform (NPF) and southern platform (SPF). Also shown are ages of the travertine: ages in bold print are stratigraphic ages (ka), and ages in italics are model ages (ka). Numbered black squares are locations of measured sections (1-3), and a sampling location (4). The location of the modern travertine-precipitating Eddleman Spring is marked by a black star. Geographic coordinates of the samples can be found in Table 1. Geologic contacts and information are modified from the Geologic Map of New Mexico (NMBGMR, 2003).

ascent of the groundwater along faults requires high hydraulic head in a confined aquifer (Crossey et al., 2011; Priewisch et al., 2013). Modern studies show that a significant component of the  $\text{CO}_2$  in travertine-depositing springs is derived from deep geological sources (Crossey et al., 2009; Williams et al., 2009).  $\text{CO}_2$  is considered to be the carrier gas of helium and helium isotopes provide a tracer of potential mantle contributions (Ballentine and Sherwood Lollar, 2002). The water chemistry of modern travertine-depositing springs shows complex mixing of shallow meteoric recharge and deeply-derived fluids (Newell et al., 2005; Crossey et al., 2006; Williams et al., 2009). Travertines can



be dated with the precise U-series method (Uysal et al., 2007; Embid, 2009; Sierralta et al., 2010) because uranium, which is soluble in natural waters, becomes incorporated in the crystal lattice of calcite during travertine precipitation (Hillaire-Marcel, 2009). Travertine deposits are often associated with Cenozoic basaltic volcanism which indicates over-pressuring of the CO<sub>2</sub>/groundwater system with magmatic gasses (Gilfillan et al., 2008).

METHODS

Mapping of the travertine platforms was conducted on RGIS digital orthophotos (1 m) and USGS 7.5' topographic maps in the field, using additional information from geologic maps compiled by Jicha (1958) and the New Mexico Bureau of Geology and Mineral Resources (NMBGMR, 2003). The travertine extent was digitized on digital orthophotos in ArcMap GIS in order to assess the volume of the deposit. The area was multiplied by an average thickness of the two platforms, which was determined through field mapping and available borehole reports provided by the NMBGMR. Measured sections at the northern platform were sampled for U-series and petrographic analysis to assess travertine ages and facies, respectively. The samples were cut into slabs and micro-drilled to obtain powder from dense travertine layers for U-series analysis. Cut hand samples and slabs were used to analyze travertine facies macroscopically. The powdered samples were dated at the Radiogenic Isotope Laboratory at the University of New Mexico with the U-series method as described in Asmerom et al. (2010). This is a reliable dating method for measuring geologic age of about 500-600 ka (Edwards et al., 1987) because the <sup>234</sup>U-<sup>230</sup>Th system returns to secular equilibrium within analytical resolution after about 6-8 half-lives of the daughter isotope, <sup>230</sup>Th, which has a half-life of 75,700 years (Cheng et al., 2000). We calculated <sup>234</sup>U model ages for two samples that were out of U-series range (Table 1) by assuming the initial <sup>234</sup>U for these samples based on the initial <sup>234</sup>U of successfully dated samples (Priewisch et al., 2013).

TRAVERTINE MORPHOLOGIES AND FACIES

The travertine of the northern platform was mapped in detail and dated. Its eastern part is a fissure ridge in terms of classic travertine morphology (Chafetz and Folk, 1984; Pentecost, 2005) that formed along an approximately NNW-SSE trending fault (Fig. 3). The fault is now concealed by travertine but we infer its trace from a fault mapped by Jicha (1958) to the south of the

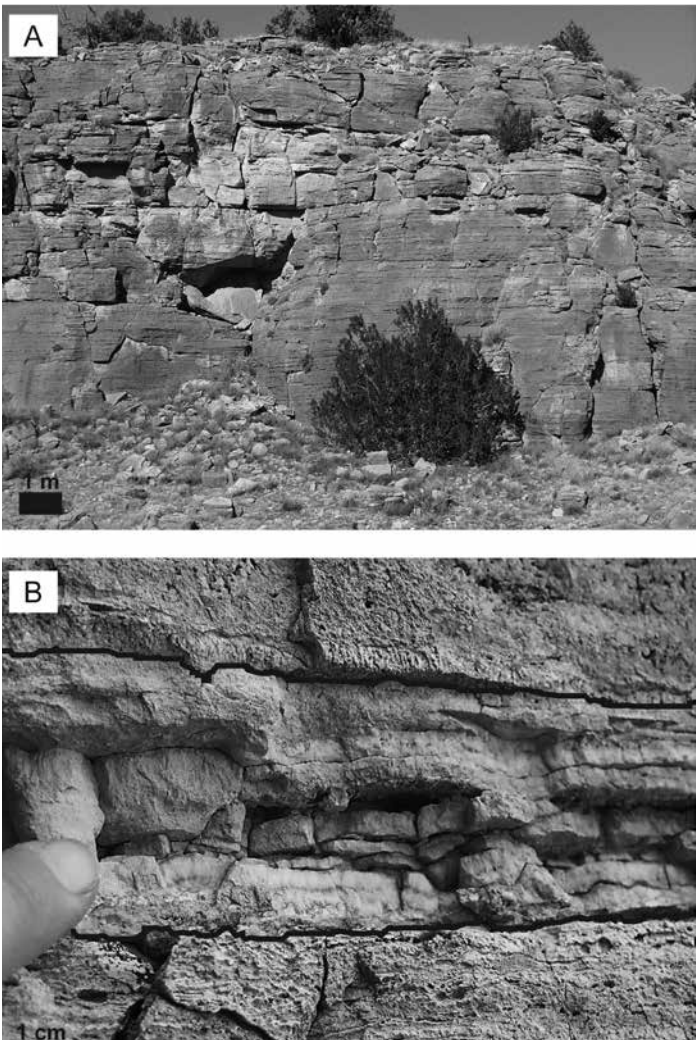


FIGURE 4. A) Fractured beds of horizontally bedded travertine at the southern end of the fissure ridge. B) E-W striking horizontal feeder vein (outlined in black) cutting across bedded travertine. The vein formed when travertine-precipitating groundwater was pushed into fractures in the existing travertine deposit during times of high hydraulic head. The vein is filled with sparry calcite.

deposit. The central fissure is not well-preserved, but evidence for it is given by the bedding orientation of the travertine; along the central part of the fissure ridge the beds dip away from each other (Fig. 3). Fault-related fissure ridges like at Mesa del Oro form on tensional fissures where travertine precipitates from spring orifices along a central fracture (Chafetz and Folk, 1984; Hancock et al., 1999; Pentecost, 2005; Brogi and Capezzuoli, 2009). The fissure ridge is cross-cut by horizontal and vertical feeder veins (Figs. 4a and 5) that conveyed travertine-precipitating fluids to the surface, similar to those

TABLE 1 Locations, U-Series and Model Ages of Travertine Samples.

Sample No.	Sample ID	Eastng	Northng	U-Series Age	+ Error	- Error	Model Age*
		NAD 83		(ka)	(ka)	(ka)	(ka)
T1	AP10-MDO4a	284164	3849773	252,750	5,500	5,275	
T2	AP10-MDO13-b1	284132	3849805	337,163	8,241	7,728	
T3	AP10_MDO12C-a	285719	3848485				650-760
T4	AP10-MDO30	284181	3847946	565,700	84,917	52,105	
T5	AP10-MDO46A-b	284171	3847946				590-700
T6	AP10-MDO53B-a	285808	3846487	360,581	13,800	12,628	

\*(Priewisch et al., 2013)

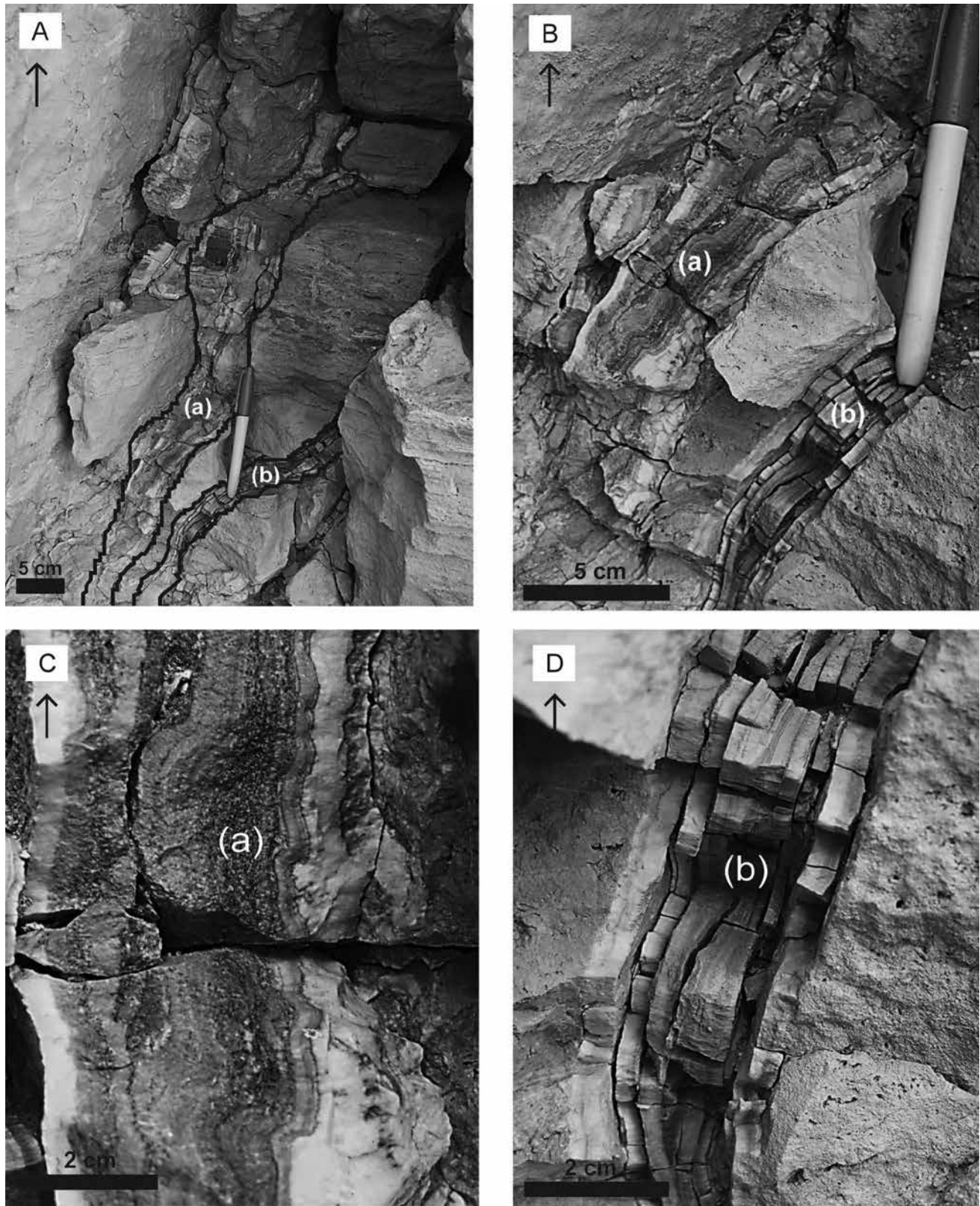


FIGURE 5. A) N-S striking vertical feeder veins (outlined in black) cutting across bedded travertine that is highly fractured. The veins formed when travertine-precipitating groundwater was pushed into fractures in the existing travertine deposit during times of high hydraulic head. B) Close-up view of the two central veins, (a) and (b). C) Close-up view of vein (a) showing intricate sparry calcite layers in different colors filling the vein. D) Close-up view of vein (b) showing parallel sparry calcite layers filling the vein. Black arrows in the photos are pointing upwards.



described in Italy (Brogi and Capezzuoli, 2009; De Filippis et al., 2012).

We identified two travertine facies for the northern platform at Mesa del Oro, which are described below. Our classifications are influenced by Chafetz and Folk (1984) and Alonso-Zarza and Tanner (2010) who give excellent overviews of travertine facies and morphologies. However, their facies classifications are based on modern, still active travertine systems, which are very different from ancient travertine deposits like the one at Mesa del Oro. It is often difficult to interpret the depositional environment of an ancient deposit based only on travertine types shown in the rock record because the same travertine type may form in different environments. Therefore, we modified the existing facies classifications to describe our ancient deposit. The northern platform at Mesa del Oro is dominated by two travertine facies: a step-pool facies along the fissure ridge (Fig. 3, locations 3 and 4), and a palustrine facies to the northwest and to the west of the fissure ridge (Fig. 3, locations 1 and 2, respectively).

The fissure ridge is characterized by the step-pool facies that formed when water emanating from the central fissure flowed down the flanks of the growing fissure ridge. Figure 6 shows a stratigraphic column of the different travertine types that represent the step-pool facies: peloidal travertine and horizontally bedded travertine that form in pools behind travertine dams, travertine drapes (Fig. 6a) that represent the overflow of travertine dams, and microterraces (Fig. 6b) that form on steeply sloped dams and drapes (Fouke et al., 2000; Pentecost, 2005). An additional travertine type of the step-pool facies, also observed at Mesa del Oro, is travertine that formed by calcification of microbial mats that grew in pools behind travertine dams (Fig. 7; Fouke et al., 2000; Pentecost, 2005). The step-pool facies is an important travertine facies for interpreting the carbonates as spring deposits, as opposed, for example, to lake carbonates.

The northwestern and western edge of the platform are characterized by a marsh-related or palustrine travertine facies that formed when water flowing off the fissure ridge collected on surrounding flats and in depressions where standing bodies of water promoted development of vegetated areas in wetlands, similar to occurrences elsewhere (Guo and Riding, 1999; Glover

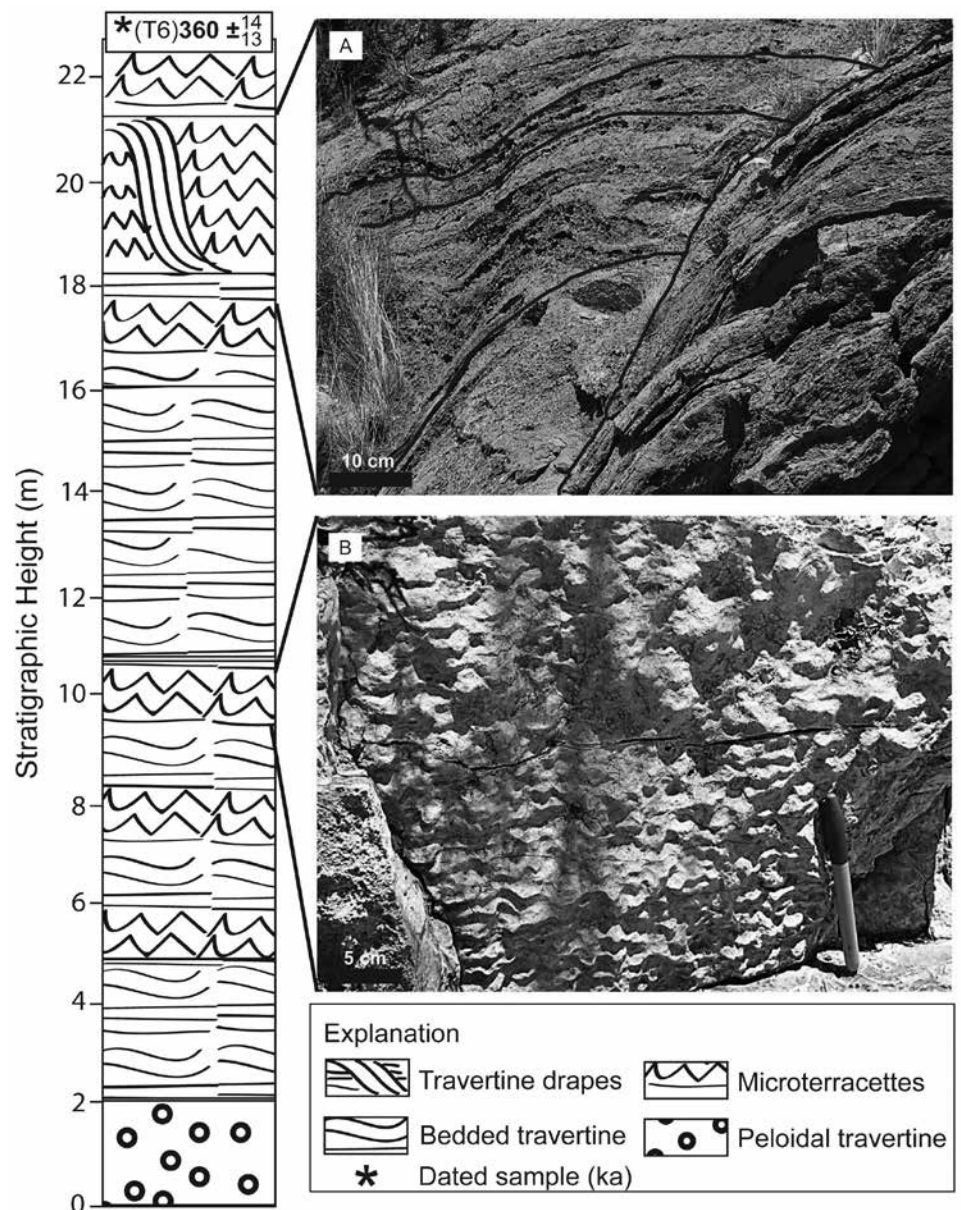


FIGURE 6. Stratigraphic column of the step-pool travertine facies from the west slope of the fissure ridge (see Fig. 3, location 3) showing travertine types that are indicative of this facies. A) Cross-sectional view of drapes that formed at large dams where the water flowed over the edge of one pool and down into the next pool. Some of the drapes are outlined in black. Flow direction of the water was down the slope of the fissure ridge to the west (left). B) Microterraces that formed on the surface of a steeply sloping drape. Flow direction of the water was down the slope of the fissure ridge to the west (toward the viewer). Note that the spacing of the microterraces indicates the surface steepness (steeper toward the base of the outcrop).

and Robertson, 2003; Pentecost, 2005). Figure 8 shows a stratigraphic column of the different travertine types that represent the palustrine facies: bedded travertine (Fig. 8a), peloidal travertine with phytoclasts (Fig. 8b) and peloidal travertine that form in shallow ponds in the marsh, and travertine breccia that form when travertine crusts break up during flood events and get deposited in nearby areas.

According to drilling reports provided by the New Mexico Bureau of Geology and Mineral Resources the travertine is thickest

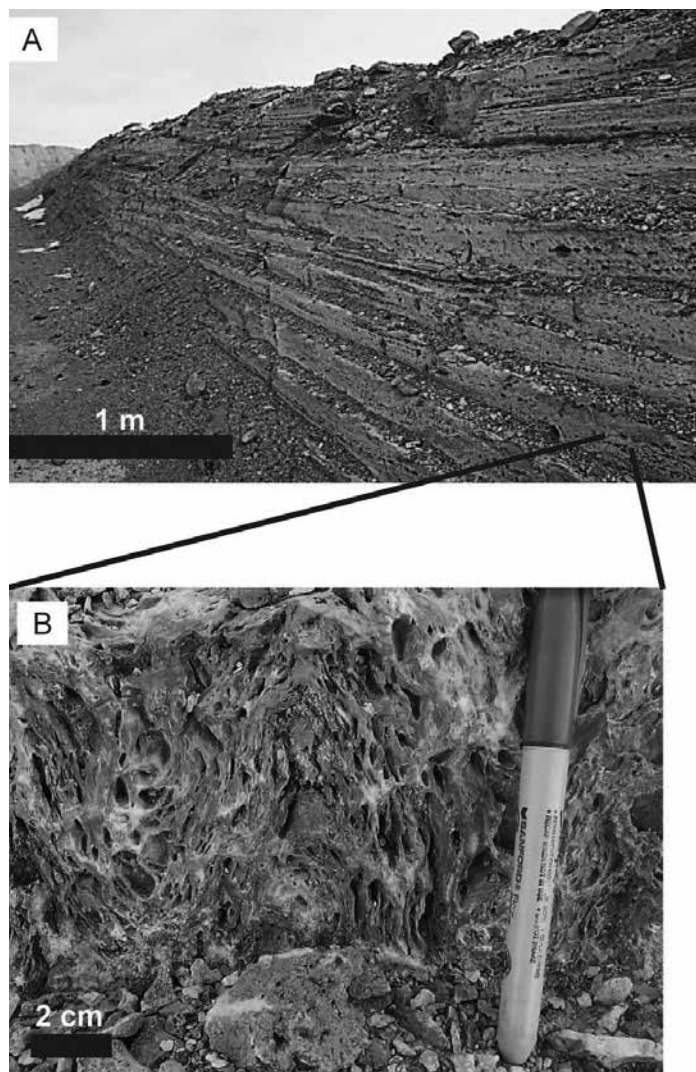


FIGURE 7. Step-pool travertine facies at the northern end of the fissure ridge (see Fig. 3, location 4). A) E-W striking bedded travertine exposed in a quarry on top of the northern platform. B) Close-up view of travertine fabric formed by calcification of microbial mats that grew in the step-pools.

(up to 63 m) in the central part of the fissure ridge, while the thickness decreases (~8 m to 11 m) to the northwest and to the west of the northern platform which was determined by field mapping. The drilling reports provided by the New Mexico Bureau of Geology and Mineral Resources also show that at the southern platform the travertine is thickest (up to 48 m) in the southern central part of the deposit where we infer the location of the primary spring vents.

#### TRAVERTINE VOLUMES AND AGES

The two travertine platforms at Mesa del Oro cover an area of 27 km<sup>2</sup> and have an estimated travertine volume of 0.7 km<sup>3</sup>. The calculated volume is a minimum volume because we do not know how much of the travertine has been eroded. New U-series ages

are  $566 \pm 68.5$  ka,  $360 \pm 13.5$  ka,  $337 \pm 8.0$  ka, and  $253 \pm 5.4$  ka (Fig. 3; Table 1). We calculated model ages (Priewisch et al., 2013) for two samples that were out of U-series range ( $> 500$  ka) and these model ages are slightly older, 590-700 ka and 650-760 ka (Table 1). Based on these results we infer that travertine formation at Mesa del Oro occurred in two intervals, from 360 ka to 250 ka and from ~560 ka to 760 ka. Two samples from the northwestern edge of the northern platform gave ages of 337 ka at the bottom of the section and 253 ka at the top (Figs. 3 and 8), in agreement with their stratigraphic position. The two measured ages suggest travertine deposition may have taken place over 84 ky, resulting in a long-term average deposition rate of 10 cm/ky which we interpret to be a maximum accumulation rate given the likelihood of unconformities in the section.

#### DISCUSSION

Travertine morphology and facies as well as the volume and ages of the travertine deposit have implications for understanding neotectonic processes, paleohydrology, and paleoclimate.

The NNW-SSE trending fissure ridge at the northern platform (Fig. 3) likely formed due to the E-W extension of the Rio Grande rift and attests to repeated fault activity (Brogi et al., 2010; Ricketts et al., 2012) as shown by vertical and horizontal veins that cross-cut the deposit (Figs. 4b and 5). These veins suggest that CO<sub>2</sub>-rich groundwater ascended along the fault and was precipitated in extensional veins. We infer that part of the CO<sub>2</sub> was derived from the mantle by analogy to the nearby active Eddleman Spring (Fig. 3), which may be similar to the springs responsible for depositing the travertine. The geochemistry of this spring is characterized by a high amount of CO<sub>2</sub> and the presence of primordial <sup>3</sup>He that suggests the input of mantle volatiles (Newell et al., 2005). Volcanic activity that might have led to an over-pressuring of the CO<sub>2</sub>/groundwater system with magmatic gasses (Baldrige et al., 1987; Gilfillan et al., 2008; Embid, 2009) is recorded by the Mesa del Oro basalt flows which were dated by Baldrige et al. (1987) between 3.4 Ma and 1.1 Ma. Younger flows to the northeast of Mesa del Oro have ages between 800 ka and 300 ka (Baldrige et al., 1987), and the two intervals of travertine formation from 360 ka to 250 ka and from ~560 ka to 760 ka (Fig. 3; Table 1) overlap this period of Quaternary basaltic volcanism.

Although there are no active springs on the travertine platforms, the existence of the Pronoun Caves, which are dissolution caves in the travertine, provide evidence for past groundwater activity (Forbes and Stephens, 1994). The feeder veins (Figs. 4b and 5) cutting horizontally and vertically across the fissure ridge show that the hydraulic head was episodically high enough to push groundwater up and through the existing travertine deposit and we infer that groundwater originating from a confined aquifer



system had significant artesian head to ascend along faults and fractures at these times. Modern hydrologic studies have identified the Permian San Andres-Glorieta (SAG) aquifer and Pennsylvanian Madera limestone as the regional aquifers at Mesa del Oro (Goff et al., 1983; Baldwin and Anderholm, 1992; Rauzi, 1999; Rawling, 2005). They also show groundwater mixing and complex flow paths because of two different recharge areas for these aquifers, the Lucero uplift to the east and the Zuni Mountains to the west (Baldwin and Anderholm, 1992). We assume that aquifers, recharge areas, and groundwater flow paths were similar at the time of travertine formation, and that the recharge areas received enough precipitation during extended wet times to increase the hydraulic head of the aquifers and facilitate travertine precipitation at Mesa del Oro during both glacial and interglacial paleoclimate periods (Priewisch et al., 2013).

Paleohydrologic conditions, topography, and the amount of CO<sub>2</sub> degassing affected travertine precipitation and facies at Mesa del Oro. Although fissure ridges are related to normal faulting (Brogi and Capezzuoli, 2009; De Filippis et al., 2012), the flow rate of the water flowing out of the central fissure can influence its height and width (Hancock et al., 1999), and thus slope gradient. The peloidal and bedded travertine of the palustrine travertine facies to the northwest and west of the fissure ridge reflect the presence of adjacent wetlands, ponds or lakes, and hence the availability of significant amounts of water that collected in the marsh. Windblown clastic material accumulated in these water bodies and led to the formation of marly sediment. The availability of water also led to the growth of abundant vegetation represented by travertine layers that contain plant casts and fibrous material.

## CONCLUSION

New ages show that large-volume travertine formation at Mesa del Oro occurred in two intervals, from 360 ka to 250 ka, and from ~560 ka to 760 ka. These intervals coincide with local

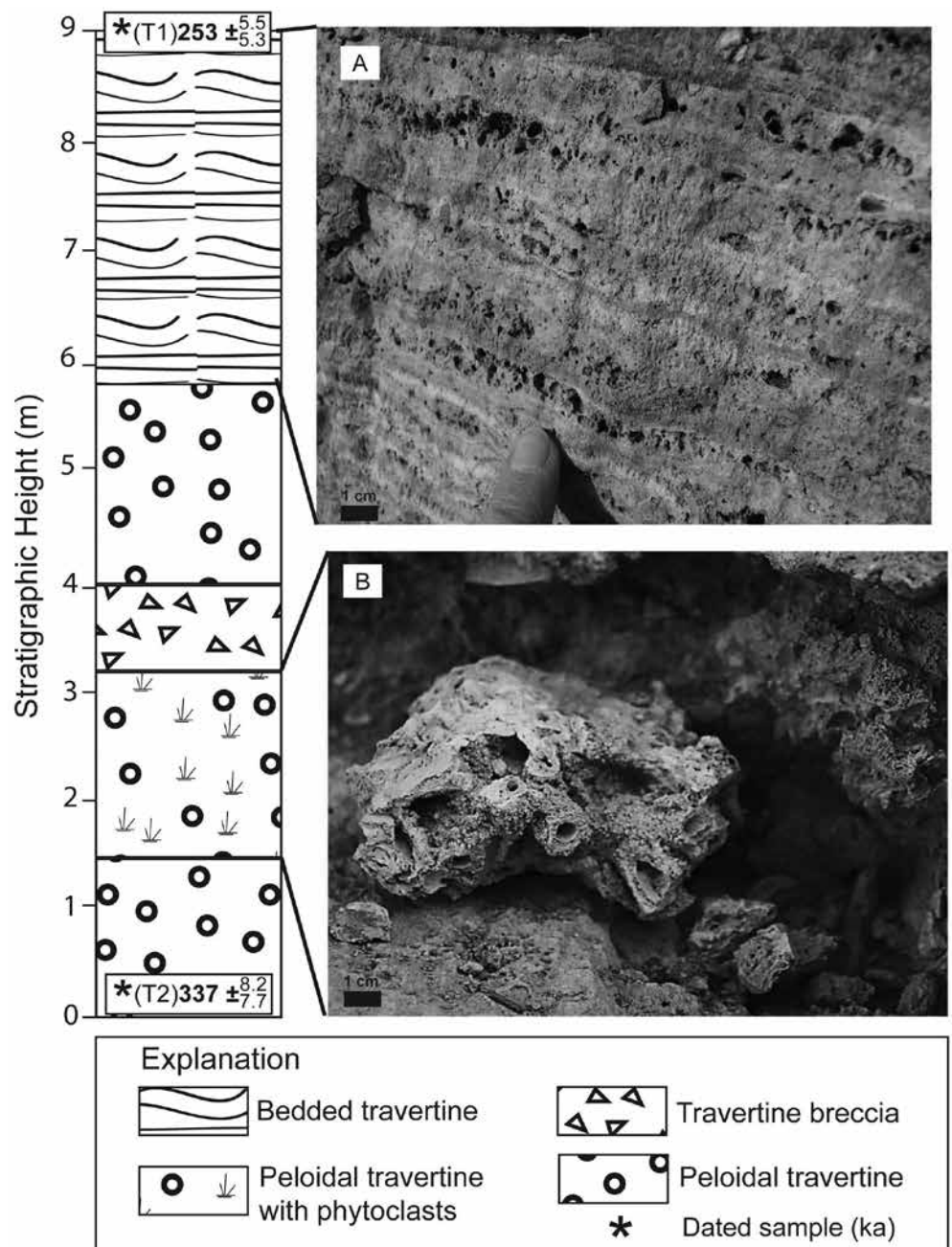


FIGURE 8. Stratigraphic column of the palustrine travertine facies to the northwest of the northern platform (see Fig. 3, location 2) showing travertine types that are indicative of this facies. A) Example of bedded travertine with alternating irregular layers of different colors and porosity. B) Peloidal travertine with phytoclasts: the micritic travertine contains calcite-encrusted stems and plant casts.

basaltic volcanism between 300 ka and 800 ka that we infer led to high CO<sub>2</sub> influx to the groundwater system. Increased recharge during wet climate periods are interpreted to have caused high hydraulic head in a confined aquifer leading to artesian springs and facilitating travertine precipitation. The formation of a fissure ridge and associated marsh reflect the availability of significant amounts of water and hence, we conclude that travertine formation at Mesa del Oro represents extended wet times during paleoclimate periods.

## ACKNOWLEDGMENTS

We thank Yemane Asmerom and Victor Polyak for access to the Radiogenic Isotope Laboratory at the University of New Mexico and for valuable feedback on the results. We extend our thanks to the staff of the New Mexico Bureau of Geology and Mineral Resources for providing travertine cores from Mesa del Oro, to Bob Worsley, owner of NZ Legacy LLC, for access to his property and travertine quarries at Mesa del Oro, to Jim Harrison, manager of NZ Legacy LLC, for valuable information about the travertine deposit, to the rancher Mark Chavez for access to his land, and to Alexander Nereson for his invaluable support as a field assistant. We thank Bruce Allen and Peter Mozley for valuable edits, which helped greatly to improve this paper. We also thank Stacy Timmons and Kate Zeigler for editorial handling and additional comments. This material is based upon work supported by the National Science Foundation under Grant no. NSF 0838575 and support was also provided by generous funding through Grants-In-Aid by the New Mexico Geological Society.

## REFERENCES

- Alonso-Zarza, A.M. and Tanner, L.H. (eds), 2010, Carbonates in Continental Settings: Facies, Environments and Processes: Developments in Sedimentology, v. 61, 378 p.
- Asmerom, Y., Polyak, V.J., and Burns, S.J., 2010, Variable winter moisture in the southwestern United States linked to rapid glacial climate shifts: *Nature Geoscience*, v. 3, p. 114–117, doi:10.1038/ngeo754.
- Baldrige, W.S., Perry, F.V., and Shafiqullah, M., 1987, Late Cenozoic volcanism of the southeastern Colorado Plateau: I. Volcanic geology of the Lucero area, New Mexico: *Geological Society of America Bulletin*, v. 99, p. 463–470.
- Baldwin, J.A., and Anderholm, S.K., 1992, Hydrogeology and ground-water chemistry of the San Andres-Glorieta aquifer in the Acoma embayment and eastern Zuni uplift, west-central New Mexico: U.S. Geological Survey Water-Resources Investigations Report 91-4033, 302 p.
- Ballentine, C.J., and Sherwood Lollar, B., 2002, Regional groundwater focusing of nitrogen and noble gases into the Hugoton-Panhandle giant gas field, USA: *Geochimica et Cosmochimica Acta*, v. 66, no. 14, p. 2483–2497.
- Barker, J.M., Austin, G.S., and Sivills, D.J., 1996, Travertine in New Mexico - Commercial deposits and otherwise: *New Mexico Bureau of Mines and Mineral Resources Bulletin*, v. 154, p. 73–92.
- Brogi, A., and Capezzuoli, E., 2009, Travertine deposition and faulting: the fault-related travertine fissure-ridge at Terme S. Giovanni, Rapolano Terme (Italy): *International Journal of Earth Sciences*, v. 98, p. 931–947, doi:10.1007/s00531-007-0290-z.
- Brogi, A., Capezzuoli, E., Aqué, R., Branca, M., and Voltaggio, M., 2010, Studying travertines for neotectonics investigations: Middle–Late Pleistocene syn-tectonic travertine deposition at Serre di Rapolano (Northern Apennines, Italy): *International Journal of Earth Sciences*, v. 99, p. 1383–1398, doi:10.1007/s00531-009-0456-y.
- Chafetz, H.S., and Folk, R.L., 1984, Travertines; depositional morphology and the bacterially constructed constituents: *Journal of Sedimentary Petrology*, v. 54, no. 1, p. 289–316.
- Cheng, H., Edwards, R., Hoff, J., Gallup, C., Richards, D., and Asmerom, Y., 2000, The half-lives of uranium-234 and thorium-230: *Chemical Geology*, v. 169, p. 17–33.
- Crossey, L.J., Fischer, T.P., Patchett, P.J., Karlstrom, K.E., Hilton, D.R., Newell, D.L., Huntton, P., Reynolds, A.C., and De Leeuw, G.A.M., 2006, Dissected hydrologic system at the Grand Canyon: Interaction between deeply derived fluids and plateau aquifer waters in modern springs and travertine: *Geology*, v. 34, no. 1, p. 25–28, doi:10.1130/G22057.1.
- Crossey, L.J., Karlstrom, K.E., Springer, A.E., Newell, D., Hilton, D.R., and Fischer, T., 2009, Degassing of mantle-derived CO<sub>2</sub> and He from springs in the southern Colorado Plateau region—Neotectonic connections and implications for groundwater systems: *Geological Society of America Bulletin*, v. 121, no. 7–8, p. 1034–1053, doi:10.1130/B26394.1.
- Crossey, L.J., Karlstrom, K.E., Newell, D.N., Kooser, A., and Tafoya, A., 2011, The La Madera travertines, Rio Ojo Caliente, northern New Mexico: Investigating the linked system of CO<sub>2</sub>-rich springs and travertines as neotectonic and paleoclimate indicators, in *New Mexico Geological Society Guidebook, 62nd Field Conference*, p. 121–136.
- De Filippis, L., Faccenna, C., Billi, A., Anzalone, E., Brilli, M., Ozkul, M., Soligo, M., Tuccimei, P., and Villa, I.M., 2012, Growth of fissure ridge travertines from geothermal springs of Denizli Basin, western Turkey: *Geological Society of America Bulletin*, v. 124, no. 9–10, p. 1629–1645, doi:10.1130/B30606.1.
- Edwards, R., Chen, J., and Wasserburg, G., 1987, <sup>238</sup>U–<sup>234</sup>U–<sup>230</sup>Th–<sup>232</sup>Th systematics and the precise measurement of time over the past 500,000 years: *Earth and Planetary Science Letters*, v. 81, p. 175–192.
- Embid, E.H., 2009, U-Series dating, geochemistry, and geomorphic studies of travertines and springs of the Springerville Area, east-central Arizona, and tectonic implications [M.S. thesis]: Albuquerque, University of New Mexico, 103 p.
- Faccenna, C., Soligo, M., Billi, A., De Filippis, L., Funicello, R., Rossetti, C., and Tuccimei, P., 2008, Late Pleistocene depositional cycles of the Lapis Tiburtinus travertine (Tivoli, Central Italy): possible influence of climate and fault activity: *Global and Planetary Change*, v. 63, p. 299–308, doi:10.1016/j.gloplacha.2008.06.006.
- Forbes, J., and Stephens, D., 1994, Caves of the Mesa del Oro travertine, New Mexico, U.S.A.: Breakthroughs in Karst Geomicrobiology and Redox Geochemistry Special Publication, v. 1, p. 18–20.
- Fouke, B.W., Farmer, J.D., Des Marais, D.J., Pratt, L., Sturchio, N.C., Burns, P.C., and Discipulo, M.K., 2000, Depositional facies and aqueous-solid geochemistry of travertine-depositing hot springs (Angel Terrace, Mammoth Hot Springs, Yellowstone National Park, U.S.A.): *Journal of Sedimentary Research*, v. 70, no. 3, p. 565–585.
- Gilfillan, S.M.V., Ballentine, C.J., Holland, G., Blagburn, D., Sherwood Lollar, B., Stevens, S., Schoell, M., and Cassidy, M., 2008, The noble gas geochemistry of natural CO<sub>2</sub> gas reservoirs from the Colorado Plateau and Rocky Mountain provinces, USA: *Geochimica et Cosmochimica Acta*, v. 72, no. 4, p. 1174–1198, doi:10.1016/j.gca.2007.10.009.
- Glover, C., and Robertson, A.H.F., 2003, Origin of tufa (cool-water carbonate) and related terraces in the Antalya area, SW Turkey: *Geological Journal*, v. 38, p. 329–358, doi:10.1002/gj.959.
- Goff, F., McCormick, T., Gardner, J.N., Trujillo, P.E., Counce, D., Vidale, R., and Charles, R., 1983, Water geochemistry of the Lucero uplift, New Mexico: A geothermal investigation of low-temperature mineralized fluids: Los Alamos National Laboratory LA-9738-OBES, 26 p.
- Guo, L.I., and Riding, R., 1999, Rapid facies changes in Holocene fissure ridge hot spring travertines, Rapolano Terme, Italy: *Sedimentology*, v. 46, p. 1145–1158.
- Hancock, P.L., Chalmers, R.M., Altunel, E., and Cakir, Z., 1999, Travertines: using travertines in active fault studies: *Journal of Structural Geology*, v. 21, p. 903–916.
- Hillaire-Marcel, C., 2009, The U-series dating of (biogenic) carbonates: *Earth and Environmental Science*, v. 5, p. 1–12.
- Jicha, H., 1958, Geology and mineral resources of Mesa del Oro Quadrangle, Socorro and Valencia Counties, New Mexico: *State Bureau of Mines and Mineral Resources Bulletin*, v. 56, 67 p.
- Kampman, N., Burnside, N.M., Shipton, Z.K., Chapman, H.J., Nicholl, J.A., Ellam, R.M., and Bickle, M.J., 2012, Pulses of carbon dioxide emissions from intracrustal faults following climatic warming: *Nature Geoscience*, v. 5, p. 352–358, doi:10.1038/ngeo1451.
- Newell, D.L., Crossey, L.J., Karlstrom, K.E., Fischer, T.P., and Hilton, D.R., 2005, Continental-scale links between the mantle and groundwater systems of the western United States: Evidence from travertine springs and regional He isotope data: *GSA Today*, v. 15, no. 12, p. 4–10.
- NMBGMR, 2003, Geologic Map of New Mexico: New Mexico Bureau of Geology and Mineral Resources, scale 1:500 000, 2 sheets.
- Pentecost, A., 2005, Travertine: Springer Verlag Berlin Heidelberg, 445 p.
- Priewisch, A., Crossey, L.J., Karlstrom, K.E., Polyak, V., Asmerom, Y., Nereson, A., and Ricketts, J.W., 2013, U-series geochronology of large-volume trav-

- ertine deposits of the southeastern Colorado Plateau: Evaluating episodicity, tectonic and paleohydrologic controls: New Mexico Geological Society Annual Spring Meeting Proceedings Volume, p. 50.
- Rauzi, S.L., 1999, Carbon Dioxide in the St. Johns - Springerville Area, Apache County, Arizona: Arizona Geological Survey, Open-File Report 99-2, 24 p.
- Rawling, G.C., 2005, Geology and hydrologic setting of springs and seeps on the Sevilleta National Wildlife Refuge: New Mexico Bureau of Geology and Mineral Resources, Open-File report 495, 90 p.
- Ricketts, J.W., Priewisch, A., Kolomaznik, M., and Karlstrom, K.E., 2012, Calcite-filled fractures in travertine used to constrain the timing and orientation of Quaternary extension along the western margin of the Rio Grande, central New Mexico, New Mexico Geological Society Annual Spring Meeting Proceedings Volume, p. 36.
- Sierralta, M., Kele, S., Melcher, F., Hambach, U., Reinders, J., van Gelder, R., and Frechen, M., 2010, Uranium-series dating of travertine from Süttő: Implications for reconstruction of environmental change in Hungary: Quaternary International, v. 222, p. 178-193.
- Uysal, I.T., Feng, Y., Zhao, J.-x., Altunel, E., Weatherley, D., Karabacak, V., Cengiz, O., Golding, S.D., Lawrence, M.G., and Collerson, K., 2007, U-series dating and geochemical tracing of late Quaternary travertine in co-seismic fissures: Earth and Planetary Science Letters, v. 257, p. 450-462.
- Williams, A.J., Crossey, L.J., Karlstrom, K.E., Newell, D., Person, M., Woosey, E., 2013, Hydrogeochemistry of the Middle Rio Grande aquifer system – Fluid mixing and salinization of the Rio Grande due to fault inputs: Chemical Geology, v. 351, p. 281-298.
- Wright, H.E., 1946, Tertiary and Quaternary geology of the lower Rio Puerco area, New Mexico: Geological Society of America Bulletin, v. 57, no. 5, p. 383-456, doi:10.1130/0016-7606(1946)57.



The southern tip of the northern platform at Mesa del Oro, showing 22 m of travertine (view to the east). *Photo courtesy of Alexandra Priewisch.*