



Geology and mineral resources of the Laughlin Peak mining district, Colfax County, New Mexico

V. T. McLemore

2015, pp. 277-288. <https://doi.org/10.56577/FFC-66.277>

Supplemental data: <https://nmgs.nmt.edu/repository/index.cfm?rid=2015004>

in:

Guidebook 66 - Geology of the Las Vegas Area, Lindline, Jennifer; Petronis, Michael; Zebrowski, Joseph, New Mexico Geological Society 66th Annual Fall Field Conference Guidebook, 312 p. <https://doi.org/10.56577/FFC-66>

This is one of many related papers that were included in the 2015 NMGS Fall Field Conference Guidebook.

Annual NMGS Fall Field Conference Guidebooks

Every fall since 1950, the New Mexico Geological Society (NMGS) has held an annual [Fall Field Conference](#) that explores some region of New Mexico (or surrounding states). Always well attended, these conferences provide a guidebook to participants. Besides detailed road logs, the guidebooks contain many well written, edited, and peer-reviewed geoscience papers. These books have set the national standard for geologic guidebooks and are an essential geologic reference for anyone working in or around New Mexico.

Free Downloads

NMGS has decided to make peer-reviewed papers from our Fall Field Conference guidebooks available for free download. This is in keeping with our mission of promoting interest, research, and cooperation regarding geology in New Mexico. However, guidebook sales represent a significant proportion of our operating budget. Therefore, only *research papers* are available for download. *Road logs*, *mini-papers*, and other selected content are available only in print for recent guidebooks.

Copyright Information

Publications of the New Mexico Geological Society, printed and electronic, are protected by the copyright laws of the United States. No material from the NMGS website, or printed and electronic publications, may be reprinted or redistributed without NMGS permission. Contact us for permission to reprint portions of any of our publications.

One printed copy of any materials from the NMGS website or our print and electronic publications may be made for individual use without our permission. Teachers and students may make unlimited copies for educational use. Any other use of these materials requires explicit permission.

This page is intentionally left blank to maintain order of facing pages.

GEOLOGY AND MINERAL RESOURCES OF THE LAUGHLIN PEAK MINING DISTRICT, COLFAX COUNTY, NEW MEXICO

VIRGINIA T. McLEMORE

New Mexico Bureau of Geology and Mineral Resources, New Mexico Institute of Mining and Technology, Socorro, NM, ginger@nmbg.nmt.edu

ABSTRACT—The Laughlin Peak district in the Laughlin Peak-Chico Hills igneous complex is in the southern portion of the younger Raton-Clayton volcanic field, southeast of Raton in northeastern New Mexico, along the Jemez Lineament, and is part of the North American Cordilleran alkaline-igneous belt that extends from Alaska and British Columbia southward into New Mexico and eastern Mexico. The Laughlin Peak-Chico Hills complex was emplaced just before or at the beginning of Rio Grande rift extension (22–37 Ma). Host rocks in the Laughlin Peak district are alkaline, predominantly ferroan, predominantly metaluminous to peralkaline and plot as A-type granites, WPG (within-plate granites), and active continental margins zone. The igneous rocks exhibit typical light rare earth elements (REE) enriched chondrite-normalized REE patterns of alkaline rocks with no europium anomaly. The alkaline igneous rocks in the district are similar in composition and texture to igneous rocks found in two other REE districts in the North American Cordilleran alkaline-igneous belt (also known as the Great Plains Margin or GPM) in New Mexico, the Gallinas and Cornudas Mountains. Although there has been no mineral production from the Laughlin Peak district, three types of mineral deposits have been identified: (1) carbonatites, (2) breccia pipe deposits, and (3) Th-REE hydrothermal veins. Since 1987, only minor exploration of these deposits occurred because of low commodity prices and environmental concerns. However, as the current demand for critical commodities like REE has increased, new exploration programs have encouraged additional research on the geology of these deposits. Thorium, REE and possibly gold are potential commodities in the Laughlin Peak district, but additional drilling is required to fully understand the mineral resource potential. Detailed studies on the mineralogy and paragenesis also are required in the Laughlin Peak district and should be completed before advanced exploration. These studies will greatly enhance exploration efforts. The diversity of igneous rocks and associated mineral deposits along the boundary of the Great Plains with the Southern Rocky Mountain and Basin and Range provinces suggests that this region is characterized by multiple pulses of highly fractionated and differentiated magmas. In the Laughlin Peak-Chico Hills complex, two different chemical trends of phonolite are found that could be a result of differences in fractionation. Both upper mantle and lower crustal source rocks may be involved, although in the Laughlin Peak-Chico Hills complex, a lower crustal source with possible mixing of upper crustal rocks is suggested by geochemical data. Deep-seated fracture systems or crustal lineaments, such as the Jemez Lineament, apparently channeled the magmas and hydrothermal fluids. Once magmas and metal-rich fluids reached shallow levels, the distribution and style of these intrusions, as well as the resulting associated mineral deposits, were controlled by local structures and host rock compositions.

INTRODUCTION

The North American Cordilleran alkaline-igneous belt extends from Alaska and British Columbia southward into New Mexico and eastern Mexico (Fig. 1). Along this belt, gold, fluorine, zirconium, rare earth elements (REE), and other elements have been found and exploited from several types of mineral deposits. In New Mexico, the belt extends from the Sangre de Cristo Mountains, southward to the Cornudas Mountains, in the northern Trans-Pecos alkaline-igneous belt (Fig. 2). North and McLemore (1986) and McLemore (1996, 2015a, b) summarized the deposits in this belt and called them Great Plains Margin (GPM) deposits. Significant gold production in New Mexico has come from some deposits within this belt. Alternative classifications by other workers include Au-Ag-Te veins (Cox and Bagby, 1986; Bliss et al., 1992; Kelley et al., 1998), alkalic-gold or alkaline-igneous related gold deposits (Fulp and Woodward, 1991; Thompson, 1991a, b; Bonham, 1988; Mutschler et al., 1985, 1991; Richards, 1995; Jensen and Barton, 2000), porphyry gold deposits (Rytuba and Cox, 1991) and the Rocky Mountain Gold Province.

Since 1987, only minor exploration and development of these deposits occurred because of low commodity prices and environmental concerns. However, as the current demand for critical commodities like REE and tellurium has increased, new exploration programs elsewhere in the North American Cordilleran alkaline-igneous belt have encouraged additional research on the geology of these deposits. The origin of these deposits is still not well understood, but compilation of past data, including geologic mapping, age dates, and isotopic and chemical analyses of igneous rocks and associated mineral deposits, allows for a better understanding of the characterization and origin of these deposits.

The Laughlin Peak district is in the Laughlin Peak-Chico Hills igneous complex southeast of Raton in northeastern New Mexico (Fig. 2). The older Laughlin Peak-Chico Hills igneous complex (22–37 Ma) is overprinted by the younger Raton-Clayton volcanic field (3.5–9 Ma; Staatz, 1985; Stroud, 1997), and both igneous fields lie along the Jemez Lineament.

A number of previous workers have examined the geology and mineral resources of the Laughlin Peak district (Staatz, 1985, 1986, 1987; Schreiner, 1991; Potter, 1988), but a re-examination of the Laughlin Peak district is warranted in light of today's potential economic importance of REE and gold. Therefore, the purposes of this report are to (1) summarize the previous work and exploration history of the Laughlin Peak district; (2) describe the geology, geochemistry, and mineral deposits in the district; (3) summarize the mineral resource potential of the district; and

(4) summarize the origin of the igneous rocks and mineral deposits of the district.

PREVIOUS WORK, EXPLORATION HISTORY, AND METHODS OF STUDY

The Laughlin Peak-Chico Hills area was first mapped by Wood et al. (1953) as part of oil and gas investigations in northeastern New Mexico. Some of the early studies of the igneous rocks were by Collins (1949) and Stobbe (1949). Tschanz (1958) was the first to report the Th-REE veins and McLemore (1983) examined the uranium and thorium potential in the area. Staatz (1985, 1986, 1987) conducted geologic mapping and described the Th-REE veins and Scott and Pillmore (1993) presented a geologic map of the Raton 30 by 60 degree quadrangle. McLemore et al. (1988a, b) summarized the REE potential and North and McLemore (1986, 1988) and McLemore (2001) examined the gold potential in the district. Potter (1988, 2007) studied the geochemistry of the igneous rocks. Schreiner (1991) examined the mineral resource potential of the carbonatites, Th-REE veins, and breccia pipes. Geochronology has been part of regional studies

by Stormer (1972), Staatz (1985, 1986, 1987), Scott et al. (1990) and Stroud (1997).

There has been no mineral production from the Laughlin Peak district, except for some quarried rock for construction purposes, although numerous shallow pits, trenches, and shafts were dug since the 1950s exploring for predominantly uranium and thorium. A few shallow holes were drilled in the 1950s for uranium and thorium (Table 1). In 1986, two holes were drilled in breccia pipes to determine the potential for REE and gold mineralization in the western portion of the district (Table 1) by James Hennigan in cooperation with the New Mexico Bureau of Mines and Mineral Resources (now New Mexico Bureau of Geology and Mineral Resources, NMBGMR). Some of these data are contained in this report. Since then several mining and exploration companies have briefly examined the area for REE and gold potential, but there has been no additional drilling. Most of the area is privately owned, although some areas are state and federal mineral ownership.

TABLE 1. Locations of drill holes for uranium, thorium, REE, and gold exploration in the Laughlin Peak district, shown in Figure 3. Coordinates are NAD27.

Latitude (degrees)	Longitude (degrees)	Approximate date of drilling	Depth (m)
36.6063623	104.2270253	1950s	?
36.6024581	104.2197842	1986	35
36.6019016	104.2187249	1986	76

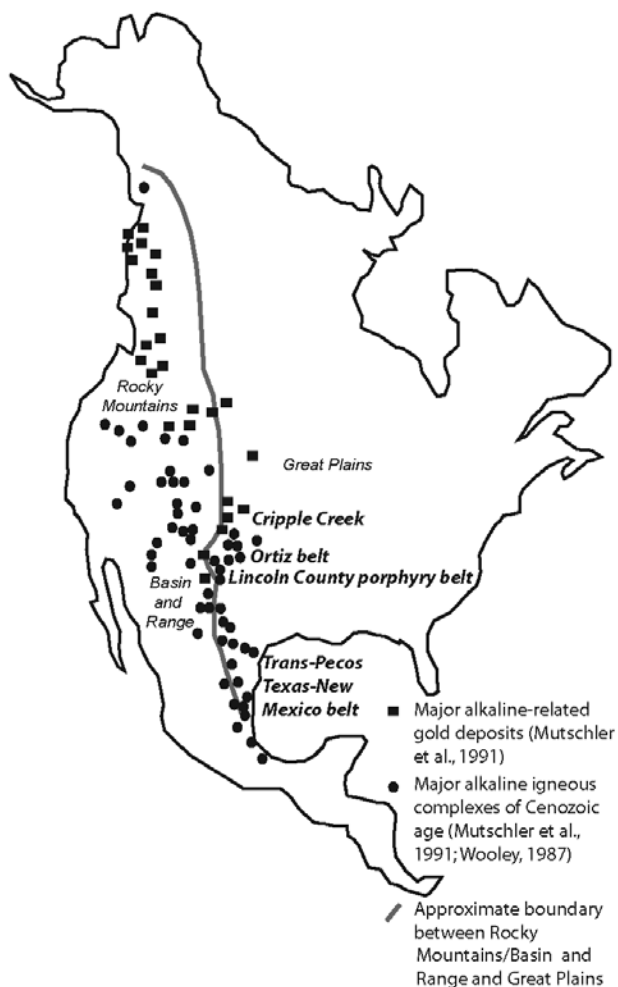


FIGURE 1. Extent of the North American Cordilleran alkaline-igneous belt (Woolley, 1987; Mutschler et al., 1991; McLemore, 1996). The Laughlin Peak district is between the Ortiz Belt and Cripple Creek.

Data used in this report have been compiled from a literature review, field examination, and NMBGMR unpublished data, including mineralogy and geochemistry of the igneous rocks and the mineral deposits. Chemical compositions of igneous rocks and mineral deposits in the Laughlin Peak district are in Appendix 1 and were obtained from Staatz (1985, 1986, 1987), Potter (1988), and Schreiner (1991). Analytical methods are described in these cited reports. The chemical data were plotted on various geochemical and tectonic diagrams (Shand, 1943; Irvine and Baragar, 1971; Pearce et al., 1984; Whalen et al., 1987; Frost et al., 2001; Schandl and Gorton, 2002), as described below. A variety of nomenclatures for the igneous rocks in these districts were used in previous studies, because the rocks typically are porphyritic in a fine-grained matrix and include shallow intrusions as well as extrusive volcanic rocks. The nomenclature of igneous rocks in this report mostly conforms to the International classification proposed by LeMaitre (1989), where the primary classification of igneous rocks is based upon mineralogy and, if too fine-grained to determine mineralogy, by the use of whole-rock geochemical analyses using the TAS (Cox et al., 1979) and R1-R2 (de la Roche et al., 1980) diagrams.

Published and unpublished data on existing prospects within the Laughlin Peak district were inventoried and compiled in the New Mexico Mines Database (Appendix 2; McLemore et al., 2005a, b). Chemical analyses of carbonatites are in Appendix 3 and of veins and breccia pipes in Appendix 4 (from Staatz, 1985; Schreiner, 1991; NMBGMR unpublished data).

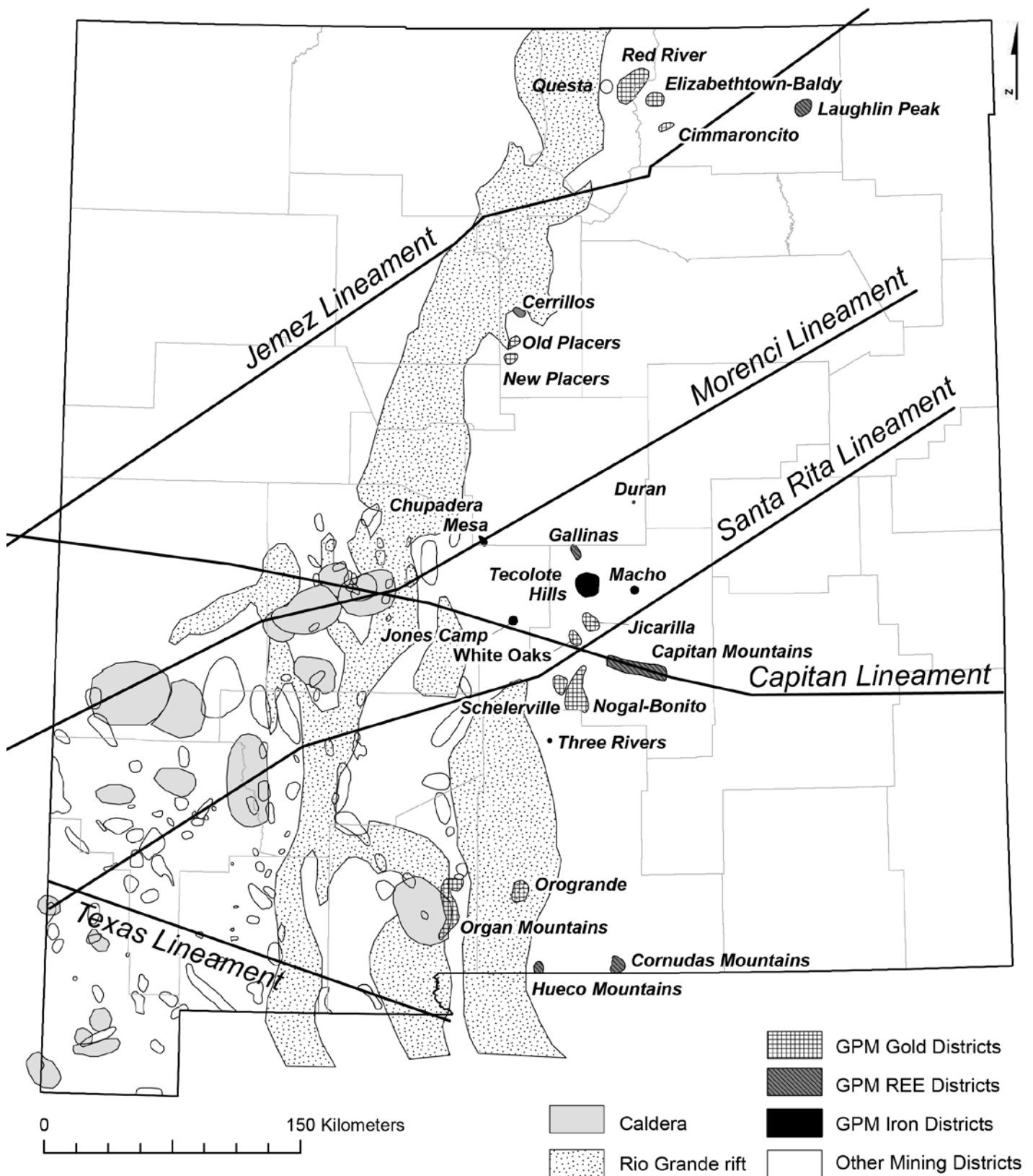


FIGURE 2. Mining districts related to the North American Cordilleran alkaline-igneous belt (GPM or Great Plains Margin deposits), lineaments, Rio Grande rift, calderas, and other Eocene-Miocene mining districts in New Mexico (Chapin et al., 1978, 2004; McLemore, 1996, 2001; Sims et al., 2002; McLemore et al., 2005a, b). Descriptions of GPM districts, including mineral production, are summarized in McLemore (2015b).

REGIONAL GEOLOGY

Jemez Lineament

Deep crustal structures play critical roles in controlling large-scale emplacement of magmas, crustal fluid flow and the formation of mineral deposits (Chernicoff et al., 2002; Crafford and Grauch, 2002; Woolley and Bailey, 2012). The Jemez Lineament (Fig. 2) is one of these regional crustal structures that was originally defined as an alignment of Tertiary-Quaternary volcanic centers and northeast-trending faults (Mayo, 1958; Aldrich, 1986; Chamberlin, 2007). A better definition of the Jemez Lineament is a northeast-trending zone characterized by active uplift (Nereson et al., 2013), low seismic velocity in the mantle (Magnani et al., 2004, 2005; Chamberlin, 2007), and repeated igneous activity and reactivation along faults that extends from Springerville, Arizona through the Jemez caldera and into the Raton-Clayton volcanic field (Fig. 2). The lineament also coincides with the southern edge of a 300-km wide transition zone between the Yavapai (1.8–1.7 Ga) and Mazatzal (1.7–1.6 Ga) Proterozoic provinces (Magnani et al., 2004, 2005).

Raton-Clayton volcanic field

The Raton-Clayton volcanic field is along the northeasternmost extension of the Jemez Lineament in northeastern New Mexico along the boundary between the Great Plains and Sangre de Cristo Mountains and represents the easternmost extent of Neogene-Quaternary volcanic activity in New Mexico. The field consists predominantly of alkali olivine basalt flows and cones, and lesser amounts of basaltic to feldspathoidal flows and cones, andesite to dacite domes, and olivine nephelinite to tridymite-bearing hornblende dacite and was emplaced during late Rio Grande rifting (Jones et al., 1974; Stormer, 1972; Phelps et al., 1983; Scott et al., 1990; Stroud, 1997). Three phases of eruption occurred (Stroud, 1997): Raton (9.0–7.3 and 5.6–3.6 Ma), Clayton (3.0–2.2 Ma) and Capulin (1.68 Ma–56 ka). Geochemical and isotopic compositions suggest a lithospheric mantle source (Phelps et al., 1983; Zhu, 1995).

GEOLOGY OF THE LAUGHLIN PEAK-CHICO HILLS DISTRICT

The Laughlin Peak-Chico Hills igneous complex forms most of the district, is older than the Raton-Clayton volcanic field, and was emplaced just before or at the beginning of Rio Grande rift extension at 22–37 Ma. The Laughlin Peak-Chico Hills igneous complex is dominated by the Chico Sill Complex, which has domed and intruded Cretaceous sedimentary rocks (Wood et al., 1953; Scott et al., 1990). The Laughlin Peak-Chico Hills igneous complex consists of a variety of alkaline extrusive (trachyandesite (32.3 ± 1.5 , K/Ar), basalt, trachybasalt, rhyodacite) and intrusive lithologies, including trachyte (36.7 ± 1.3 Ma, K/Ar, Staatz, 1985), trachyphonolite, trachyandesite, phonotephrite (25.3 ± 0.9 Ma, K/Ar, Staatz, 1986), Chico Phonolite (25.80 ± 0.88 Ma, K/Ar, Staatz, 1985; 22.8 ± 0.23 $^{40}\text{Ar}/^{39}\text{Ar}$, Stroud, 1997), lamprophyre

(24.06 ± 1.01 Ma, K/Ar; Staatz, 1986), and carbonatite (Fig. 3). The Chico Phonolite occurs in large sills and dikes as much as 1 m thick. Many of the volcanic and intrusive rocks have a porphyritic texture, suggesting emplacement near or at the surface.

Carbonatites are carbonate-rich rocks of apparent magmatic derivation and typically contain REE, U, Th, Nb, Ta, Zr, Hf, Fe, Ti, V, Cu, apatite, vermiculite, and barite (Woolley and Kempe, 1989; Verplanck et al., 2014). Some of the world's largest economic REE deposits are associated with carbonatites, such as Mountain Pass, California and Bayan Obo, Inner Mongolia, China (Verplanck et al., 2014).

GEOCHEMISTRY OF IGNEOUS ROCKS

Chemical analyses of some Laughlin Peak-Chico Hills igneous rocks are in Appendix 1. The igneous rocks are alkaline (Fig. 4A), predominantly ferroan, alkali-calcic to alkali (Frost et al., 2001), metaluminous to peralkaline (Fig. 4B) and plot as A-type granites (Whalen et al., 1987), WPG (within-plate granites; Pearce et al., 1984), and active continental margins zone (Schandl and Gorton, 2002). Two chemical trends of phonolite are observed; high Zr and low Zr (Fig. 4C; Potter, 1988). The high Zr phonolites are peralkaline and have high concentrations of Zr, Y, U, Th and Rb and low Mg numbers, Cr, and Ba. The igneous rocks exhibit typical light REE-enriched chondrite-normalized REE patterns of alkaline rocks with no europium anomaly (Fig. 4D). Initial strontium isotope compositions ($0.7042\text{--}0.7053$; Potter, 2007) are similar to other GPM districts (McLemore, 2015a, b), and slightly higher than initial strontium isotope compositions of the younger rocks in the Raton-Clayton volcanic field, implying a different source region ($0.7028\text{--}0.7050$; Jones et al., 1974; Zhu, 1995). Epsilon Nd values are in the range of 2.1 to -1.5 ($^{143}\text{Nd}/^{144}\text{Nd}$ between 0.51275 and 0.51256; Potter, 2007). Collectively, the geochemical and isotopic data suggest the Laughlin Peak-Chico Hills rocks are derived from a lower crustal source with possible mixing of upper crustal rocks.

DESCRIPTION OF MINERAL DEPOSITS

Three types of mineral deposits have been identified, as defined by mineralogy and chemistry: (1) carbonatites, (2) breccia pipe deposits, and (3) Th-REE hydrothermal veins (Staatz, 1985, 1986, 1987; Schreiner, 1991). Table 2 summarizes the mineralogy of the carbonatites, veins, and breccia pipes for each deposit type and Figure 3 shows their locations.

Carbonatite

Radioactive carbonatite dikes intrude an Oligocene phonotephrite (Staatz, 1985; Schreiner, 1991) and have the chemical composition of predominantly ferruginous calciocarbonatite (Fig. 5; after Woolley and Kempe, 1989; Gittins and Harmer, 1997), with some calciocarbonatite (also known as calcite carbonatite or sövite) and magnesiocarbonatite (also known as dolomite carbonatite or beforsite). The carbonatites are poorly exposed and range in size from 12 m to 1219 m long and less than 1 m wide

and consist of predominantly calcite, dolomite, barite, with trace amounts of apatite, goyazite (including REE-rich end member florencite to calcium-rich end member crandallite), bastnaesite, monazite, pyrite, and quartz (Table 2; Schreiner, 1991; NMBGMR unpublished data). The Laughlin Peak carbonatites contain <1.6% total REE (Fig. 6; Appendix 3).

TABLE 2. Selected minerals found in the carbonatites, veins, and breccias in the Laughlin Peak district (Staatz, 1985; Schreiner, 1991; NMBGMR unpublished data).

Mineral	Chemical formula	Carbonatites	Th-REE veins	Breccia pipes
quartz	SiO ₂	?	X	X
calcite	CaCO ₃	X	X	X
dolomite	CaMg(CO ₃) ₂	X		
magnetite	Fe ₃ O ₄	X	X	X
barite	BaSO ₄	X	X	X
apatite	Ca ₁₀ (PO ₄) ₆ (OH,F,Cl) ₂	X		
goyazite	(Sr,Ca,Ce)Al ₃ (PO ₄) ₂ (OH) ₅	X		
florencite	(La,Ce)Al ₃ (PO ₄) ₂ (OH) ₆	X		
crandallite	CaAl ₃ (PO ₄) ₂ (OH) ₅ · H ₂ O	X		
bastnaesite	[Ce, La, (CO ₃)]F	X		
ancylite	SrCe(CO ₃) ₂ (OH) · (H ₂ O)	?		
monazite	(Sm,Gd,Ce,Th,Ca)(PO ₄)	X		
pyrite	FeS ₂	X	X	X
gold	Au	X		X
fluorite	CaF ₂	?	X	X
niobium rutile	TiO ₂	X		X
xenotime	(Yb,Y,Er)PO ₄	X		?
churchite	YPO ₄ · 2(H ₂ O)			?
brockite	(Ca,Th,Ce)PO ₄ · H ₂ O	X		
zircon	ZrSiO ₄	X	X	X

Th-REE veins

The radioactive Th-REE veins cut Cretaceous sedimentary rocks and Tertiary volcanic flows, dikes and sills, strike predominantly west to northwest with steep north or south dips, and are less than 600 m long and less than 1 m wide (Fig. 3). The veins are linear zones of brecciated and fractured host rock. Crandallite, xenotime, thorite, and brookite are the predominant REE minerals in a gangue of quartz, calcite, feldspar, and trace amounts of barite, fluorite, rutile, zircon, pyrite, magnetite, and iron and manganese oxides (Table 2; Staatz, 1985; Schreiner, 1991). The veins contain <1.2% total REE and <165 ppb Au and exhibit light REE enriched chondrite-normalized REE patterns (Schreiner, 1991; NMBGMR unpublished data). The veins also contain as much as 2200 ppm F, 2000 ppm Ba, 532 ppm Nb,

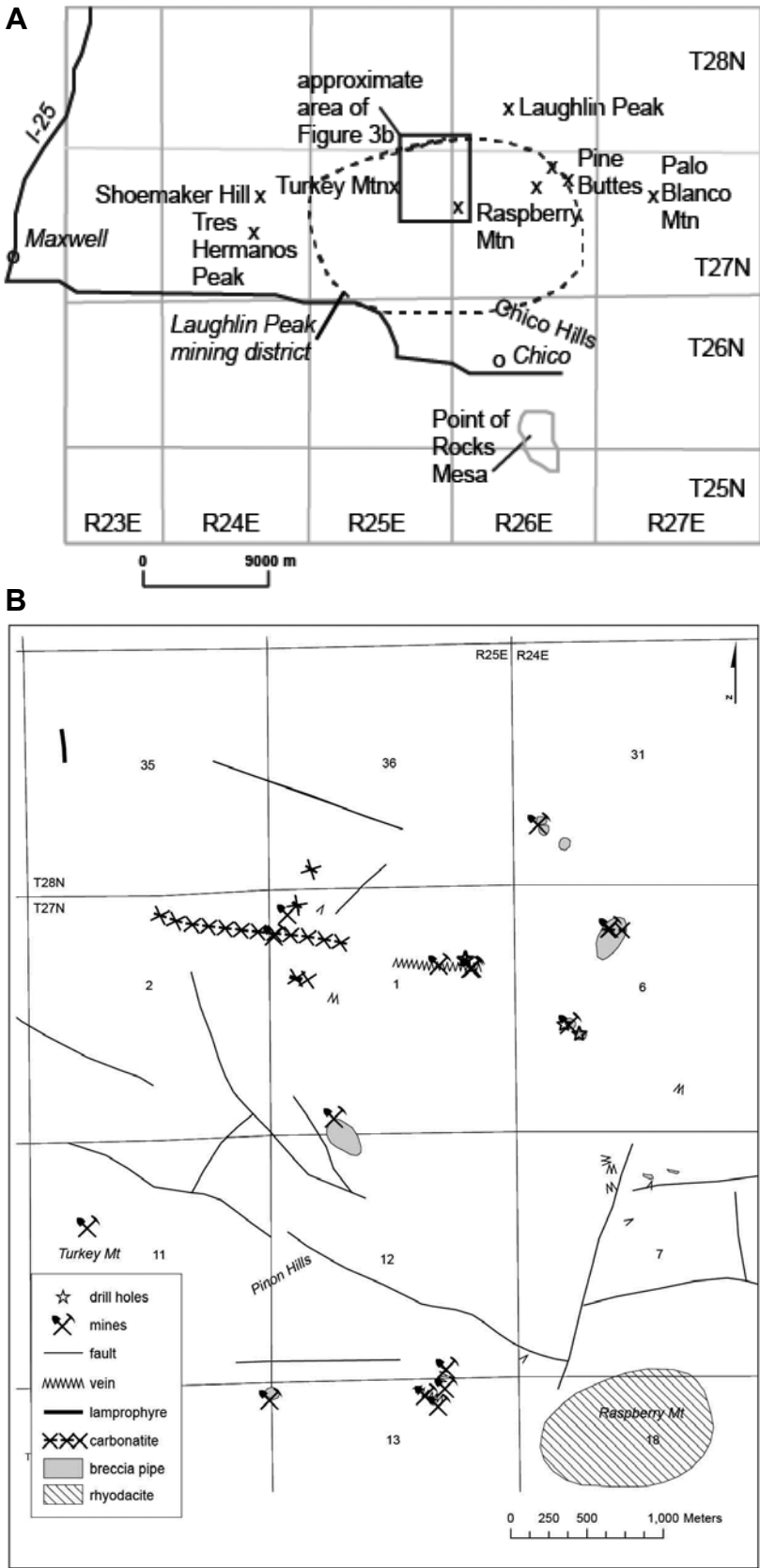


FIGURE 3. Location maps of the Laughlin Peak district, Colfax County, New Mexico (simplified from Staatz, 1986, 1987; Schreiner, 1991). Prospects and drill holes are summarized in Appendix 2 and Table 1. A. Regional. B. Northern portion of the district.

172 ppm U, 75 ppm Ta, and 68 ppm Mo, with low or no Te (Appendix 4). The veins exhibit light REE enriched chondrite-normalized REE patterns (Fig. 7).

Breccia Pipe Deposits

The radioactive breccia pipes are intrusive (Fig. 3) and consist of various iron and manganese oxide-stained, angular to subrounded rock fragments (less than 0.6 m diameter) in a fine-grained siliceous and carbonate matrix of quartz and feldspar. The breccia pipes are circular to oval shaped and six of the

largest pipes range in size from 46 to 366 m (Fig. 3); smaller pipes have been mapped. Quartz, feldspar, and clay are the predominant minerals with trace amounts of gold, niobium rutile (?), pyrite, zircon, xenotime or churchite (Table 2; Schreiner, 1991; NMBGMR unpublished data). The total REE is less than 3017 ppm (Fig. 7). The breccia pipes also contain as much as 5900 ppm F, 9050 ppm Ba, 535 ppm Nb, 54 ppm U and 82 ppb Au (Appendix 4; Schreiner, 1991; NMBGMR unpublished data).

Core from the holes drilled in 1986 consists of predominantly grayish breccia cut by feldspar and iron oxide veinlets. Pyrite and marcasite were disseminated in portions of the core from drill

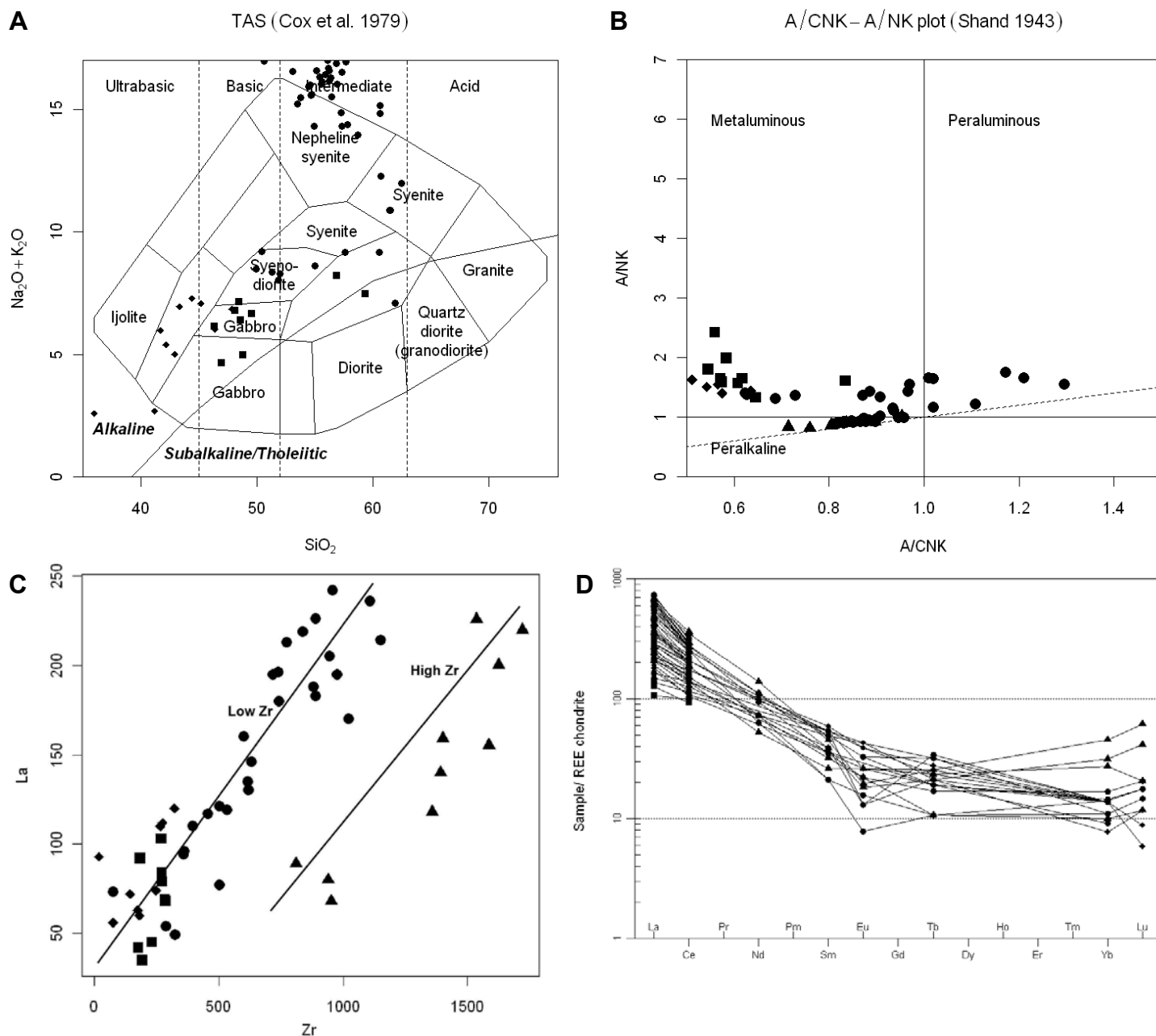


FIGURE 4A. A. TAS (total alkali-silica) in percent, after Cox et al. (1979). B. A/CNK-A/NK, after Shand (1943). C. Zr-La plot in ppm. D. Chondrite-normalized (Nakamura, 1974) REE plots for the igneous rocks from the Laughlin Peak district (data in Appendix 1; Staatz, 1986; Potter, 1988; Schreiner, 1991; NMBGMR unpublished data). Black squares are Low Zr Trend basalts; diamonds are Low Zr Trend lamprophyres; circles are Low Zr Trend phonolite, rhyodacite, and trachyte; and triangles are High Zr Trend phonolites.

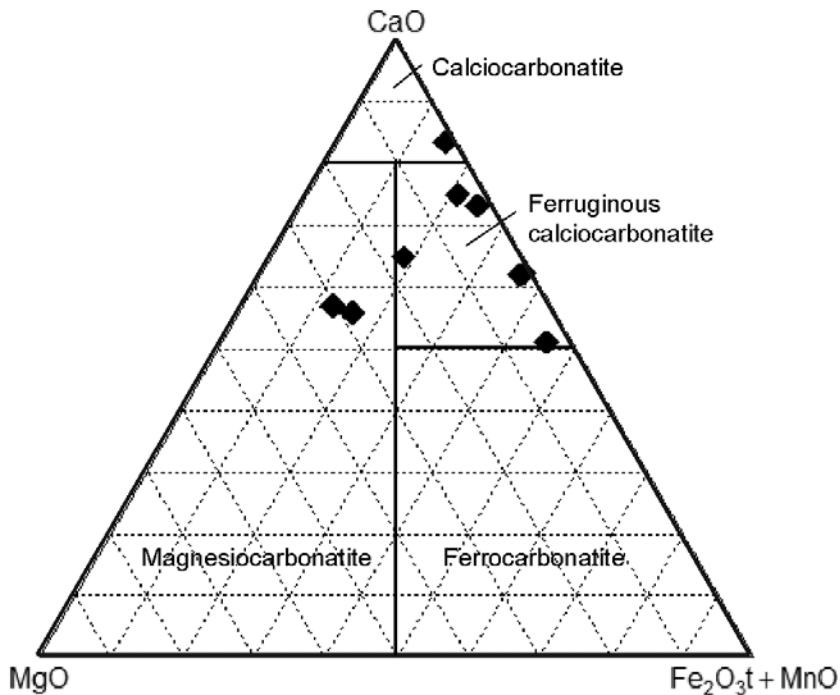


FIGURE 5. Chemical classification of Laughlin Peak carbonatites, in percent (after Woolley and Kempe, 1989 and Gittins and Harmer, 1997). Data compiled in Appendix 3.

hole 2. Only low concentrations of gold, silver, and tellurium were found in the core samples (Appendix 2).

OUTLOOK FOR MINERAL RESOURCE POTENTIAL IN THE FUTURE

There is thorium, REE and possibly gold potential in the Laughlin Peak district, but additional drilling is required to more completely understand the mineral resource potential. The best potential is in the carbonatites and Th-REE veins. However, the Laughlin Peak district is not as faulted as other GPM districts in New Mexico and this could prevent large deposits from forming. Detailed studies on the mineralogy, geochronology, and paragenesis are still required in the Laughlin Peak district and should be completed before advanced exploration. Such studies will greatly enhance exploration efforts. Any sampling should include multi-element analyses, especially gold, thorium, REE, niobium, tungsten, and tellurium.

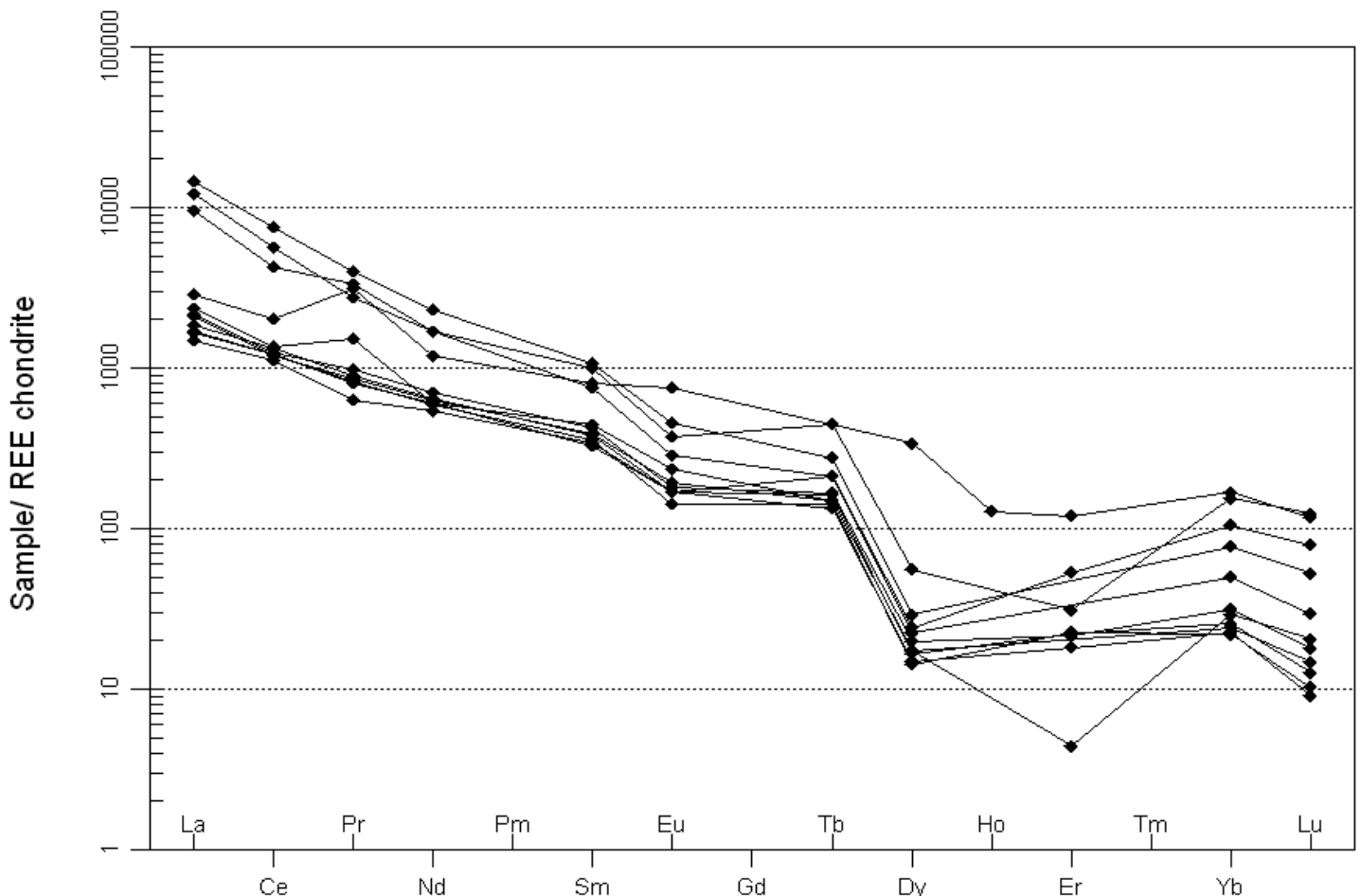


FIGURE 6. Chondrite-normalized (Nakamura, 1974) REE plots of carbonatites from Laughlin Peak. Data are from Schreiner (1991) and NMBGMR unpublished data.

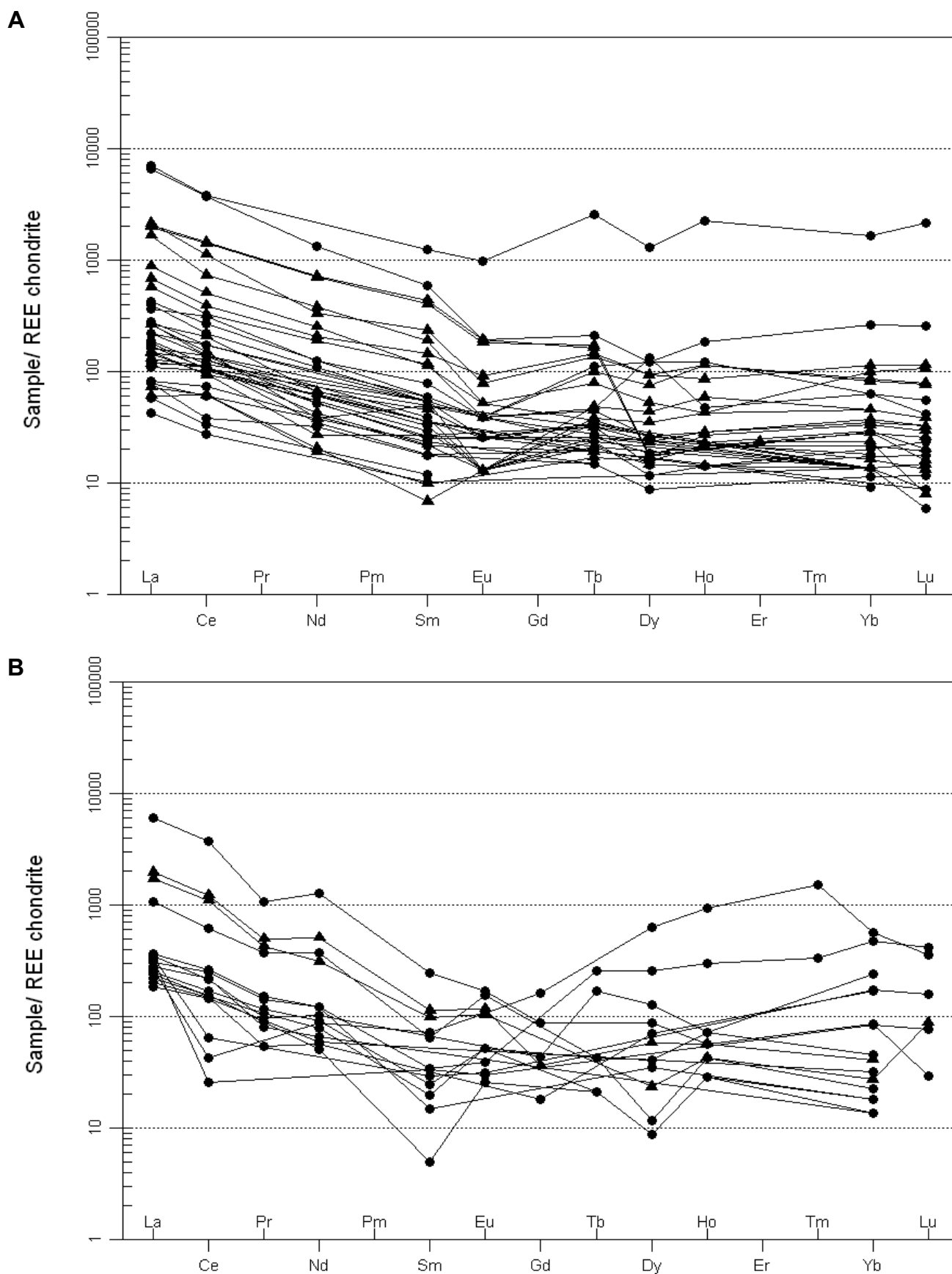


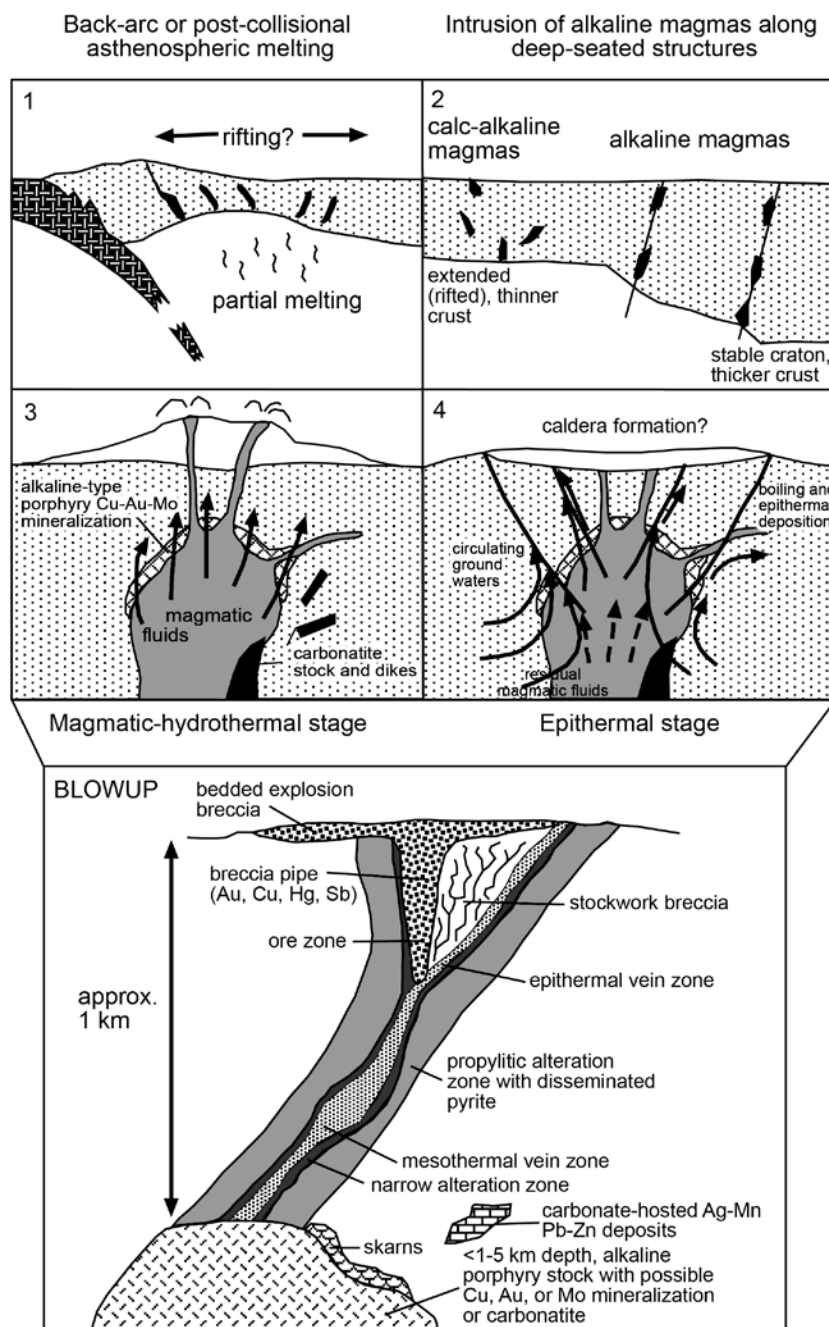
FIGURE 7. Chondrite-normalized (Nakamura, 1974) REE plots of veins (squares), breccia pipes (triangles), and altered rocks (diamonds) from the Laughlin Peak district. A. Data from Schreiner (1991). B. Data from NMBGMR unpublished files (Appendix 4).

DISCUSSION AND CONCLUSIONS

Some of the youngest ages of igneous rocks associated with New Mexico GPM deposits (22–24 Ma) are in northern New Mexico (Questa, Red River, and Laughlin Peak districts; McLemore, 2015a, b). Alkaline igneous rocks in the Laughlin Peak district are similar in composition and texture to igneous rocks in two other REE districts in the GPM belt, the Gallinas and Cornudas Mountains (Fig. 2; McLemore, 2015a, b), and are ferroan, alkali-calcic to alkali (according to Frost et al., 2001). However, igneous rocks associated with the other GPM districts, which contain predominantly gold, copper, and iron deposits are predominantly ferroan to magnesian, calc-alkalic to alkali-calcic to alkalic (McLemore, 2015a, b). Geochemically, the Laughlin Peak rocks plot as WPG (within-plate granites), according to Pearce et al. (1984), and active continental margins, according to Schandl and Gorton (2002). In contrast, igneous rocks associated with the Colorado Mineral Belt (including Cripple Creek district), also part of the North American Cordilleran alkaline-igneous belt, are magnesian, alkali-calcic to calc-alkalic and metaluminous to peraluminous (Anthony, 2005). Strontium and Nd isotope compositions of igneous rocks are similar with other GPM districts (McLemore, 2014; 2015a, b). The similar compositions of GPM igneous rocks suggest that the magmas had a common origin and were produced from similar source regions. Small differences in geochemical composition between igneous rocks are probably related to subtle differences in fractional crystallization, especially of minerals such as garnet, zircon, and apatite, and also possible water-rock interactions that could account for variations in K_2O , Na_2O , barium, rubidium, and strontium.

In New Mexico, the style of mineralization differs from that found in Colorado. Tellurium is common in many of the Colorado districts, but most GPM districts in New Mexico have elevated concentrations of tungsten, with only trace amounts or no tellurium (Kelley and Ludington, 2002; McLemore, 2013; compilation by the author). Tellurium and tungsten in most Laughlin Peak samples are below detection limits (Appendix 3, 4). However, tellurium analyses of samples from New Mexico GPM districts are limited and therefore, tellurium could be present in specific mineral zones within New Mexico districts. More detailed mineralogical and chemical analyses are required. Most GPM districts in New Mexico contain iron skarns (McLemore, 2015a, b), but there are none reported in the Laughlin Peak district. Fluorite veins are only significant in the Gallinas district where fluorite was produced, but fluorite is present only in small quantities in the Laughlin Peak district and in most GPM and Colorado districts (Kelley and Ludington, 2002; McLemore, 2015a, b).

The diversity of igneous rocks and associated mineral deposits along the boundary of the Great Plains with the Southern Rocky Mountain and Basin and Range provinces suggests that this region is characterized by multiple pulses of highly fractionated and differentiated magmas (Fig. 8). In the Laughlin Peak-Chico Hills igneous complex, two different chemical trends of phonolite are found that could be a result of differences in fractionation of a single magma or emplacement from two separate pulses of magmas. Both upper mantle and lower crustal source rocks may be involved, although in the Laughlin Peak-Chico Hills



Schematic cross section of a Great Plains margin deposit

FIGURE 8. Schematic model for formation of Great Plains Margin deposits (modified from Richards, 1995).

complex, a lower crustal source with possible mixing of upper crustal rocks is suggested by geochemical data. Carbonatites in the GPM belt are present only in the Laughlin Peak district, although they are suspected in the subsurface in the Gallinas Mountains (McLemore, 2010).

Several studies have attributed changes in the chemistry and source of the magmas to the tectonic transition between Eocene-early Oligocene subduction (Laramide, 36–75 Ma) and mid-Tertiary extension (20–36 Ma; Allen and Foord, 1991; McMillan et al. 2000; Anthony, 2005), that was triggered by changes in the subducting Farallon plate. Rollback of the Farallon flat slab occurred 23–37 Ma and resulted in a tremendous pulse of calc-alkaline ignimbrite eruptions in southwestern New Mexico (Fig. 2) and central Mexico (Chapin et al., 2004; Chapin, 2012). As the Farallon slab fragmented (Henry et al., 2010; Chapin, 2012), the asthenosphere filled gaps between the sinking slab and overlying lithosphere, producing magmas and thereby accounting for slight differences between chemical composition of the exposed igneous rocks within the GPM belt. The source regions shifted from asthenosphere and upper crust during Eocene-early Oligocene to lower crust during the late Oligocene (McMillan et al., 2000). The alkaline igneous rocks within the Laughlin Peak district and other GPM districts are likely derived from partial melting within the lower crust and lithosphere mantle, possibly reflecting metasomatism of the upper mantle (Mutschler et al., 1985; Kelley and Ludington, 2002; Pilet et al., 2008) and/or mixing of upper crustal rocks (Potter, 2007). In northeastern New Mexico, the period between 9 and 22 Ma was amagmatic, similar to the 10–24 Ma amagmatic period in southern New Mexico (McMillan et al., 2000) and was followed by <9 Ma lithosphere-derived volcanic suites, such as the Raton-Clayton volcanic field.

Deep-seated fracture systems or crustal lineaments, such as the Jemez Lineament, probably channeled the magmas and hydrothermal fluids (Chamberlin, 2007; McLemore and Zimmerer, 2009). As magmas and metal-rich fluids reached shallow levels, local structures and wall rock compositions determined distribution and final style of intrusions and resulting mineral deposits (Fig. 8).

The GPM mineral deposits are likely genetically related to the host alkaline igneous rocks. Supporting evidence for a magmatic origin elsewhere in the GPM belt includes: (1) fluid inclusion and stable isotope data from the Nogal-Bonito deposits (Douglass, 1992; Douglass and Campbell, 1994, 1995); (2) fluid inclusion, stable isotope, and age data from the Capitan quartz-REE-Th veins (Phillips et al., 1991; Banks et al., 1994; Campbell et al., 1995; Dunbar et al., 1996); (3) the nature of stockwork molybdenum deposits at Questa, including geochemical data (Ross et al., 2002; Rowe, 2012); (4) the close spatial association of mineral deposits with alkaline igneous rocks (Allen and Foord, 1991; McLemore, 2015a, b); (5) presence of skarn deposits along the contacts of intrusive rocks in many GPM districts (McLemore, 2010, 2015a, b); (6) $^{40}\text{Ar}/^{39}\text{Ar}$ studies in the Old Placers (Ortiz) district indicating a similar age of mineralization (31.56–32.20 Ma, adularia) and of the alkaline igneous rocks (31.68–33.27 Ma, Maynard, 2014); and (7) similarity in composition and texture to

other deposits at Cripple Creek, Colorado and elsewhere where a magmatic origin is favored (Maynard et al., 1989, 1990; Kelley et al., 1998; Kelley and Ludington, 2002).

ACKNOWLEDGMENTS

This report is part of on-going studies of mineral resources in New Mexico, supported by the New Mexico Bureau of Geology and Mineral Resources (NMBGMR), a division of New Mexico Institute of Mining and Technology, L. Greer Price, Director and State Geologist. This manuscript was reviewed by Lee Potter and Karen Kelley, and their comments were helpful and appreciated. Robert North was the project leader for the Hennigan Ranch project and provided most of the NMBGMR drill data used in this report.

REFERENCES

- Aldrich, M.J., Jr., 1986, Tectonics of the Jemez lineament in the Jemez Mountains and Rio Grande rift: *Journal Geophysical Research*, v. 91, no. B2, p. 1753–1762.
- Allen, M.S. and Foord, E.E., 1991, Geological, geochemical and isotopic characteristics of the Lincoln County porphyry belt, New Mexico: Implications for regional tectonics and mineral deposits: *New Mexico Geological Society, Guidebook 42*, p. 97–113.
- Anthony, E.Y., 2005, Source regions of granites and their links to tectonic environment: examples from the western United States: *Lithos*, v. 80, p. 61–74.
- Banks, D.A., Yardley, B.W.D., Campbell, A.R., and Jarvis, K.E., 1994, REE composition of an aqueous magmatic fluid: A fluid inclusion study from the Capitan pluton, New Mexico, USA: *Chemical Geology*, v. 113, p. 259–272.
- Bliss, J.D., Sutphin, D.M., Moiser, D.L., and Allen, M.S., 1992, Au-Ag-Te veins associated with alkalic rocks: U.S. Geological Survey, OF 92–208, 15 p.
- Bonham, H.F., Jr., 1988, Models for volcanic-hosted epithermal precious metal deposits; in *Bulk mineable precious metal deposits of the western United States: Geological Society of Nevada, Symposium Proceedings*, p. 259–271.
- Campbell, A.R., Banks, D.A., Phillips, R.S., and Yardley, B.W.D., 1995, Geochemistry of the Th-U-REE mineralizing fluid, Capitan Mountains, New Mexico, USA: *Economic Geology*, v. 90, p. 1273–1289.
- Chamberlin, R.M., 2007, Evolution of the Jemez Lineament: Connecting the volcanic “dots” through Late Cenozoic time: *New Mexico Geological Society, Guidebook 58*, p. 80–82.
- Chapin, C.E., Jahns, R.H., Chamberlin, R.M., and Osburn, G.R., 1978, First day road log from Socorro to Truth or Consequences via Magdalena and Winston; in *Field Guild to selected calderons and mining districts of the Datil-Mogollon volcanic field, New Mexico: New Mexico Geological Society, Special Publication no. 7*, p. 17–19.
- Chapin, C.E., Wilks, M., and McIntosh, W.C., 2004, Space-time patterns of Late Cretaceous to present magmatism in New Mexico; comparison with Andean volcanism and potential for future volcanism; in *Tectonics, geochronology and volcanism in the southern Rocky Mountains and Rio Grande rift: New Mexico Bureau of Geology and Mineral Resources, Bulletin 160*, p. 13–40.
- Chapin, C.E., 2012, Origin of the Colorado mineral belt: *Geosphere*, v. 8, p. 28–43.
- Chernicoff, C., Richards, J.P., and Zappettini, E.O., 2002, Crustal lineament control on magmatism and mineralization in northwestern Argentina: geological, geophysical, and remote sensing evidence: *Ore Geology Reviews*, v. 21, p. 127–155.
- Collins, R.F., 1949, Volcanic rocks of northeastern New Mexico: *Geological Society of America Bulletin*, v. 60, p. 1017–1040.
- Cox, K.G., Bell, J.D. and Pankhurst, R.J., 1979, *The Interpretation of Igneous Rocks*: Allen and Unwin, London, 450 p.
- Cox, D.P. and Bagby, W.C., 1986, Descriptive models of Au-Ag-Te veins; in Cox, D. P., and Singer, D. A., eds., 1986, *Mineral deposit models: U.S. Geological Survey, Bulletin 1693*, p. 124.
- Crafford, A.E.J. and Grauch, V.J.S., 2002, Geologic and geophysical evidence for the influence of deep crustal structures on Paleozoic tectonics and the alignment of world-class gold deposits, north-central Nevada, USA: *Ore Geology Reviews*, v. 21, p. 157–184.

- De la Roche, H., Leterrier, J., Grandclaude, P. and Marchal, M., 1980, A classification of volcanic and plutonic rocks using R1, R2-diagrams and major element analysis—its relationships with current nomenclature: *Chemical Geology*, v. 29, p. 183–210.
- Douglass, S.E., 1992, Characterization of alkaline rock-hosted precious and base metal mineralization in the Nogal mining district, Lincoln County, New Mexico [M.S. thesis]: New Mexico Institute of Mining and Technology, Socorro, 122 p.
- Douglass, S.E. and Campbell, A.R., 1994, Characterization of alkaline rock-related mineralization in the Nogal mining district, Lincoln County, New Mexico: *Economic Geology*, v. 89, p. 1306–1321.
- Douglass, S.E. and Campbell, A.R., 1995, Characterization of alkaline rock-related mineralization in the Nogal mining district, Lincoln County, New Mexico, Reply: *Economic Geology*, v. 90, p. 985–987.
- Dunbar, N.W., Campbell, A.R., and Candela, P.A., 1996, Physical, chemical, and mineralogical evidence for magmatic fluid migration within the Capitan pluton, southeastern New Mexico: *Geological Society of America Bulletin*, v. 108, p. 318–333.
- Frost, B.D., Barnes, C.G., Collins, W.J., Arculus, R.J., Ellis, D.J., and Frost, C.D., 2001, A geochemical classification for granitic rocks: *Journal of Petrology*, v. 42, no. 11, p. 2033–2048.
- Fulp, M.S. and Woodward, L.A., 1991, Mineral deposits of the New Mexico alkaline province (abstr.): *Geological Society of America, Abstracts with Programs*, v. 23, p. 23.
- Gittins, J. and Harmer, R.E., 1997, What is ferrocarnatite? A revised classification: *Journal of African Earth Sciences*, v. 25, no. 1, p. 159–168.
- Henry, C.D., McIntosh, W., McDowell, F.W., Lipman, P.W., Chapin, C.E., and Richardson, M.T., 2010, Distribution, timing, and controls of the Mid-Cenozoic ignimbrite flareup in western North America (abstr.): *Geological Society of America Abstracts with Programs*, v. 42, no. 5, p. 144.
- Irvine, T.N., and Baragar, W.R.A., 1971, A guide to the chemical classification of the common volcanic rocks: *Canadian Journal of Earth Sciences*, v. 8, p. 523–548.
- Jensen, E.P. and Barton, M.D., 2000, Gold deposits related to alkaline magmatism: *Society of Economic Geologists Reviews*, v. 13, p. 279–314.
- Jones, L.M., Walker, R.L., and Stormer, J.C., Jr., 1974, Isotope Composition of Strontium and Origin of Volcanic Rocks of the Raton-Clayton District, Northeastern New Mexico: *Geological Society of America Bulletin*, v. 85, p. 33–36.
- Kelley, K.D., Romberger, S.B., Beaty, D.W., Pontius, J.A., Snee, L.W., Stein, H.J., and Thompson, T.B., 1998, Geochemical and geochronological constraints on the genesis of Au-Te deposits at Cripple Creek, Colorado: *Economic Geology*, v. 93, p. 981–1012.
- Kelley, K.D. and Ludington, S., 2002, Cripple Creek and other alkaline-related gold deposits in the southern Rocky Mountains, USA: influence of regional tectonics: *Mineralium Deposita*, v. 37, p. 38–60.
- LeMaitre, R.W., ed., 1989, A classification of igneous rocks and glossary of terms: Blackwell Scientific Publications, Oxford, Great Britain, 193 p.
- Magnani, M.B., Miller, K.C., Levander, A., and Karlstrom, K., 2004, The Yavapai-Mazatzal boundary: A long-lived tectonic element in the lithosphere of southwestern North America: *Geological Society of America Bulletin*, v. 116, p. 1137–1142.
- Magnani, M.B., Levander, A., Miller, K.C., Eshete, T., and Karlstrom, K.E., 2005, Seismic investigation of the Yavapai-Mazatzal transition zone and the Jemez Lineament in northeastern New Mexico: *Geophysical Monograph*, v. 154, p. 227–238.
- Maynard, S.R., Martin, K.W., Nelson, C.J., and Schutz, J.L., 1989, Geology and gold mineralization of the Ortiz Mountains, Santa Fe County, New Mexico: *Society of Mining, Metallurgy and Exploration, Preprint No. 89-43*, 9 p.
- Maynard, S.R., Nelson, C.J., Martin, K.W., and Schutz, J.L., 1990, Geology and gold mineralization of the Ortiz Mountains, Santa Fe County, New Mexico: *Mining Engineering*, August, p. 1007–1011.
- Maynard, S.R., 2014, Geology and mineral resources of the Ortiz Mine Grant, Santa Fe County, New Mexico: New Mexico Bureau of Geology and Mineral Resources, Open-file Report 560, 178 p.
- Mayo, E.B., 1958, Lineament tectonics and some ore districts of the Southwest: *Mining Engineering*, v. 10, p. 1169–1175.
- McLemore, V.T., 1983, Uranium and thorium occurrences in New Mexico—distribution, geology, production, and resources; with selected bibliography: New Mexico Bureau of Mines and Mineral Resources, Open file Report 182, 950 p., also; U.S. Department of Energy Report GJBX11 (83).
- McLemore, V.T., North, R.M., and Leppert, S., 1988a, Rare-earth elements (REE), niobium and thorium districts and occurrences in New Mexico: New Mexico Bureau of Mines and Mineral Resources, OF-324, 28 p.
- McLemore, V.T., North, R.M., and Leppert, S., 1988b, Rare-earth elements (REE) in New Mexico: *New Mexico Geology*, v. 10, p. 33–38.
- McLemore, V.T., 1996, Great Plains Margin (alkalic-related) gold deposits in New Mexico; in Cyner, A.R. and Fahey, P.L. (eds.), *Geology and ore deposits of the American Cordillera: Geological Society of Nevada Symposium Proceedings*, Reno/Sparks, Nevada, April 1995, p. 935–950.
- McLemore, V.T., 2001, Silver and gold resources in New Mexico: New Mexico Bureau of Mines and Mineral Resources, Resource Map 21, 60 p.
- McLemore, V.T., Hoffman, G., Smith, M., Mansell, M., and Wilks, M., 2005a, Mining districts of New Mexico: New Mexico Bureau of Mines and Mineral Resources, OF-494, CD-ROM.
- McLemore, V.T., Krueger, C.B., Johnson, P., Raugust, J.S., Jones, G.E., Hoffman, G.K. and Wilks, M., 2005b, New Mexico Mines Database: *Mining Engineering*, February, p. 42–47.
- McLemore, V.T. and Zimmerer, M., 2009, Magmatic activity and mineralization along the Capitan, Santa Rita, and Morenci Lineaments in the Chupadera Mesa area, central New Mexico: *New Mexico Geological Society, Guidebook 60*, p. 375–386.
- McLemore, V.T., 2010, Geology and mineral deposits of the Gallinas Mountains, Lincoln and Torrance Counties, New Mexico; preliminary report: New Mexico Bureau of Geology and Mineral Resources, Open-file report OF-532, 92 p.
- McLemore, V.T., 2013, Tellurium Deposits in New Mexico: *SME Annual Meeting Preprint 13-104*, 8 p., <http://geoinfo.nmt.edu/staff/mclemore/projects/mineralresources/documents/13-104.pdf>.
- McLemore, V.T., 2014, Mineral deposits associated with Tertiary alkaline igneous rocks in New Mexico (abstr.): *Society of Economic Geologists 2014: Building Exploration Capability for the 21st Century, Program*, http://geoinfo.nmt.edu/staff/mclemore/projects/documents/SEG_McLemore_Alk.pdf.
- McLemore, V.T., 2015a, Mineral deposits associated with Tertiary alkaline igneous rocks in New Mexico: *Society for Mining, Metallurgy, and Exploration, 2015 Annual Meeting Preprint 15-084*, 13 p., http://geoinfo.nmt.edu/staff/mclemore/projects/documents/15_084.pdf.
- McLemore, V.T., 2015b, Great Plains Margin (alkaline-related) gold deposits in New Mexico: twenty years later: *Geological Society of Nevada, New concepts and discoveries, 2015 Symposium v. p. 1305-1327*.
- McMillan, N.J., Dickin, A.P. and Haag, D., 2000, Evolution of magma source regions in the Rio Grande rift, southern New Mexico: *Geological Society of America Bulletin*, v. 112, p. 1582–1593.
- Mutschler, F.E., Griffin, M.E., Stevens, D.S. and Shannon, S.S., Jr., 1985, Precious metal deposits related to alkaline rocks in the North American Cordillera—an interpretive review: *Transactions Geological Society of America*, v. 88, p. 355–377.
- Mutschler, F.E., Mooney, T.C., and Johnson, D.C., 1991, Precious metal deposits related to alkaline igneous rocks—a space-time trip through the Cordillera: *Mining Engineering*, v. 43, p. 304–309.
- Nakamura, N., 1974, Determination of REE, Ba, Fe, Mg, Na, and K in carbonaceous and ordinary chondrites: *Geochimica et Cosmochimica Acta*, v. 38, p. 757–775.
- Nereson, A., Stroud, J., Karlstrom, K., Heizler, M., and McIntosh, W., 2013, Dynamic topography of the western Great Plains: Geomorphic and ⁴⁰Ar/³⁹Ar evidence for mantle-driven uplift associated with the Jemez lineament of NE New Mexico and SE Colorado: *Geosphere*, v. 9, p. 521–545.
- North, R.M., and McLemore, V.T., 1986, Silver and gold occurrences in New Mexico: New Mexico Bureau of Mines and Mineral Resources, Resource Map 15, 32 p., scale 1:1,000,000.
- North, R.M., and McLemore, V.T., 1988, A classification of the precious metal deposits of New Mexico; in Bulk mineable precious metal deposits of the western United States Symposium Volume: *Geological Society of Nevada, Reno, Symposium held April 6–8, 1987*, p. 625–660.
- Pearce, J.A., Harris, N.B.W. and Tindle, A.G., 1984, Trace element discrimination diagrams for the tectonic interpretation of granitic rocks: *Journal of Petrology*, v. 24, p. 956–983.
- Phelps, D.W., Gust, D.A., and Wooden, J.L., 1983, Petrogenesis of the mafic feldspathoidal lavas of the Raton-Clayton volcanic field, New Mexico: *Contributions to Mineralogy and Petrology*, v. 84, p. 182–190.

- Phillips, R.S., Campbell, A.R., and McLemore, V.T., 1991, Th-U-REE quartz-fluorite veins, Capitan pluton, New Mexico: evidence for a magmatic-hydrothermal origin: *New Mexico Geological Society, Guidebook 42*, p. 129–136.
- Pilet, S., Baker, M.B., and Stolper, E.M., 2008, Metasomatized lithosphere and the origin of alkaline lavas: *Science*, v. 320, p. 916–919.
- Potter, L.S., 1988, Petrology and petrogenesis of Tertiary igneous rocks, Chico Hills, New Mexico [M.S. thesis]: Iowa State University, Ames, IA, 179 p.
- Potter, L.S., 2007, Trace element and Nd-Sr isotope systematics of phonolite and other rocks of the Chico Sill Complex, Northeast New Mexico (abstr.): *Abstracts of the 17th annual V. M. Goldschmidt conference, Geochimica et Cosmochimica Acta*, v. 71, p. A806.
- Richards, J.P., 1995, Alkaline-type epithermal gold deposits—a review; in Thompson, J.F.H. (ed.), *Magma, fluids, and ore deposits: Mineralogical Association of Canada, Short Course Series*, v. 23, p. 367–400.
- Ross, P.S., Jebrak, M., and Walker, B.M., 2002, Discharge of hydrothermal fluids from a magma chamber and concomitant formation of a stratified breccia zone at the Questa porphyry molybdenum deposit, New Mexico: *Economic Geology*, v. 97, p. 1679–1699.
- Rowe, A., 2012, Ore genesis and fluid evolution of the Goat Hill orebody, Questa Climax-type porphyry-Mo system, New Mexico and its comparison to the Climax-type deposits of the Colorado mineral belt [Ph.D. dissertation]: New Mexico Institute Mining Technology, Socorro, NM, 286 p.
- Rytuba, J.J. and Cox, D.P., 1991, Porphyry gold: A supplement to U.S. Geological Survey Bulletin 1693: U.S. Geological Survey, Open-file Report 91–116, 7 p.
- Schandl, E.S. and Gorton, M.P., 2002, Application of high field strength elements to discriminate tectonic settings in VMS environments: *Economic Geology*, v. 97, p. 629–642.
- Schreiner, R.A., 1991, Preliminary investigations of rare-earth-element-bearing veins, breccias, and carbonatites in the Laughlin Peak area, Colfax County, New Mexico: U.S. Bureau of Mines, MLA 91–02, 189 p.
- Scott, G.R., Wilcox, R.E., and Mehnert, H.H., 1990, Geology of volcanic and sub-volcanic rocks of the Raton-Springer area, Colfax and Union Counties, New Mexico: U.S. Geological Survey, Professional paper 1507, 58 p.
- Scott, G.R., and Pillmore, C.L., 1993, Geologic and structure-contour map of the Raton 30' x 60' Quadrangle, Colfax and Union counties, New Mexico, and Las Animas County, Colorado: U.S. Geological Survey, Map I-2266, scale 1:100,000.
- Shand, S.J., 1943, *The eruptive rocks*: 2nd edition, John Wiley, New York, 444 p.
- Sims, P.K., Stein, H.J., and Finn, C.A., 2002, New Mexico structural zone—an analog of the Colorado mineral belt: *Ore Geology Reviews*, v. 21, p. 211–225.
- Staatz, M.H., 1985, Geology and description of the thorium and rare-earth veins in the Laughlin Peak area, Colfax County, New Mexico: U.S. Geological Survey, Professional Paper 1049–E, 32 p.
- Staatz, M.H., 1986, Geologic map of the Pine Buttes quadrangle, Colfax County, New Mexico: U.S. Geological Survey, Quadrangle Map GQ-1591, scale 1:24,000.
- Staatz, M.H., 1987, Geologic map of the Tres Hermanos Peak quadrangle, Colfax County, New Mexico: U.S. Geological Survey, Quadrangle Map GQ-1605, scale 1:24,000.
- Stobbe, H.R., 1949, Petrology of volcanic rocks of northeastern New Mexico: *Geological Society of America Bulletin*, v. 60, p. 1041–1093.
- Stormer, J.C., 1972, Ages and nature of volcanic activity on the southern High Plains, New Mexico and Colorado: *Geological Society of America Bulletin*, v. 83, p. 2443–2448.
- Stroud, J.R., 1997, The geochronology of the Raton-Clayton volcanic field, with implications for volcanic history and landscape evolution [M.S. thesis]: New Mexico Institute of Mining and Technology, Socorro, p. 1–70 p.
- Thompson, T.B., 1991a, Genesis of gold associated with alkaline igneous rocks (abs.): *Geological Society of America, Abstracts with Programs*, v. 23, p. 99–100.
- Thompson, T.B., 1991b, The Bonito-Nogal district, Lincoln County, New Mexico (abs.): *Geological Society of America, Abstracts with Programs*, v. 23, p. 99.
- Tschanz, C.M., 1958, Radioactive phonolite and associated thorium-rare-earth-niobium veins in the Laughlin Peak area, Chico Hills, Colfax County, New Mexico: U.S. Geological Survey, trace Element Investigations 230, 4 p.
- Verplanck, P.L., Van Gosen, B.S., Seal, R.R., and McCafferty, A.E., 2014, A deposit model for carbonatite and peralkaline intrusion-related rare earth element deposits: U.S. Geological Survey Scientific Investigations Report 2010–5070-J, 58 p.
- Whalen, J.B., Currie, K.L., and Chappell, B.W., 1987, A-Type granites: Geochemical characteristics, discrimination and petrogenesis: *Contributions to Mineralogy and Petrology*, v. 95, p. 407–419.
- Wood, G.H., Northrup, S.A., and Griggs, R.L., 1953, Geology and stratigraphy of the Koehler and Mount Laughlin quadrangles and parts of Abbott and Springer quadrangles, eastern Colfax County, New Mexico: U.S. Geological Survey, Oil and Gas Investigations Map OM-141, scale 1:63,350.
- Woolley, A.R., 1987, Alkaline rocks and carbonatites of the world, Part 1: North and South America: University of Texas Press, Austin.
- Woolley, A.R. and Kempe, D.R.C., 1989, Carbonatites: Nomenclature, average chemical compositions and element distribution; in Bell, K., ed., *Carbonatites: Genesis and Evolution*: Unwin Hyman, London, p. 1–14.
- Woolley, A.R. and Bailey, D.K., 2012, The crucial role of lithospheric structure in the generation and release of carbonatites: geologic evidence: *Mineralogical Magazine*, v. 76, p. 259–270.
- Zhu, J., 1995, Petrogenesis of late Cenozoic volcanic rocks from the Raton-Clayton volcanic field, northeastern New Mexico and southeastern Colorado [Ph.D. dissertation]: Rice University, Houston, TX, 229 p.