

New Mexico Geological Society

Downloaded from: <http://nmgs.nmt.edu/publications/guidebooks/31>



A preliminary heat flow map of west Texas

Bruce Taylor and Robert F. Roy, 1980, pp. 137-139

in:

Trans Pecos Region (West Texas), Dickerson, P. W.; Hoffer, J. M.; Callender, J. F.; [eds.], New Mexico Geological Society 31st Annual Fall Field Conference Guidebook, 308 p.

This is one of many related papers that were included in the 1980 NMGS Fall Field Conference Guidebook.

Annual NMGS Fall Field Conference Guidebooks

Every fall since 1950, the New Mexico Geological Society (NMGS) has held an annual [Fall Field Conference](#) that explores some region of New Mexico (or surrounding states). Always well attended, these conferences provide a guidebook to participants. Besides detailed road logs, the guidebooks contain many well written, edited, and peer-reviewed geoscience papers. These books have set the national standard for geologic guidebooks and are an essential geologic reference for anyone working in or around New Mexico.

Free Downloads

NMGS has decided to make peer-reviewed papers from our Fall Field Conference guidebooks available for free download. Non-members will have access to guidebook papers two years after publication. Members have access to all papers. This is in keeping with our mission of promoting interest, research, and cooperation regarding geology in New Mexico. However, guidebook sales represent a significant proportion of our operating budget. Therefore, only *research papers* are available for download. *Road logs, mini-papers, maps, stratigraphic charts*, and other selected content are available only in the printed guidebooks.

Copyright Information

Publications of the New Mexico Geological Society, printed and electronic, are protected by the copyright laws of the United States. No material from the NMGS website, or printed and electronic publications, may be reprinted or redistributed without NMGS permission. Contact us for permission to reprint portions of any of our publications.

One printed copy of any materials from the NMGS website or our print and electronic publications may be made for individual use without our permission. Teachers and students may make unlimited copies for educational use. Any other use of these materials requires explicit permission.

This page is intentionally left blank to maintain order of facing pages.

A PRELIMINARY HEAT FLOW MAP OF WEST TEXAS

BRUCE TAYLOR and ROBERT F. ROY
 Department of Geological Sciences
 University of Texas at El Paso
 El Paso, Texas 79968

INTRODUCTION

Western Trans-Pecos Texas lies at the boundary of the Basin and Range and Great Plains, and should therefore reflect the heat flow characteristics of both tectonic provinces. Although few in number, previous heat flow measurements in the region are largely consistent with this assertion. Herrin and Clark (1956) determined the heat flow in the Permian Basin oilfields to be 1.1 H.F.U. (1 H.F.U.= 10^{-6} cal/cm²/s=41.8 mw/m²), typical of the stable mid-continent area. Three values published by Decker and Smithson (1975) indicated the possible location of the Basin and Range boundary in the westernmost counties of Trans-Pecos, and suggested a near "normal" heat flow in the south of the area, despite the presence of an extensive Tertiary igneous field. Two further measurements (Swanberg and Herrin, 1976; Smith and Jones, 1978) in the Big Bend area again indicate a heat flow only a little above that of the Great Plains, perhaps indicating a transition zone.

Heat flow data in southern New Mexico are more abundant, and a thermal anomaly associated with the Rio Grande rift is now well established (Reiter and others, 1975; Decker and Smithson, 1975; Swanberg and Morgan, 1978), distinguishable above the "normal" heat flow for the Basin and Range (about 2 H.F.U.). Much current speculation concerns the continuation (or otherwise) of the rift into northern Mexico and West Texas.

NEW HEAT FLOW MEASUREMENTS

Six new heat flow measurements are presented for westernmost Trans-Pecos Texas. The results are given in Table 1, and, along with previous values, are used to produce the heat flow map in Figure 1. Table 2 summarizes the geological setting of the boreholes.

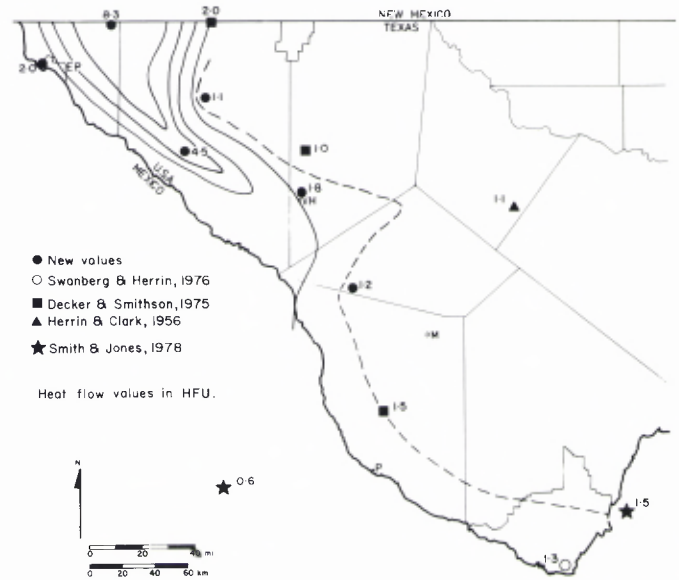


Figure 1. Heat flow map of Trans-Pecos Texas. Dashed contour is 1.5 H.F.U.; solid contours at 2, 3, 4 and 5 H.F.U. EP-El Paso, VH-Van Horn, M-Marfa, P-Presidio.

Heat flows were calculated by multiplying the geothermal gradient, obtained by a least-squares method over straight-line sections of the temperature-depth curve, by the mean thermal conductivity for that section. Temperatures were measured in the field using a thermistor probe and resistance bridge as described by Roy and others (1968), readings being made usually at 10 m intervals down the hole. Conductivities were determined in the laboratory

Table 1. Summary of heat flow results from western Trans-Pecos Texas. (*=above water table; ±=standard error; (1)=number of samples.)

Hole no.	Longitude Latitude	Elevation (m)	Depth interval (m)	Gradient (°C/km)	Mean Conductivity (mcal/cm s°C)	Heat flow (μ cal/cm ² s)		Acknowledgments
						Uncor.	Terrain Cor.	
UTEP-1	106°30'33" 31°46'36"	1210	80-115*	32.6	5.98 (7)	1.95 ±0.01	1.96 ±0.01	
HT-13	106°06'05" 31°59'30"	1264	170-270*	134.6	6.19 (5)	8.40 ±0.14	8.30 ±0.14	J. Navar, Hot Wells Ranch.
PSH-1	105°23'30" 31°42'30"	1280	30- 60*	15.3	6.98 (11)	1.07 ±0.01	—	
FM-1	105°37'08" 31°21'23"	1415	30-130*	79.5	5.90 (3)	4.69 ±0.07	4.53 ±0.07	S. Wilkey, B. French.
VHC-1	104°47'30" 31°04'20"	1206	50-110	17.9	10.44 (6)	1.87 ±0.04	—	City of Van Horn, R. Guffey.
			120-180	16.0	11.02 (7)	1.76 ±0.05	—	
V-3	104°26'32" 30°32'15"	1382	110-340	26.8	4.46 (12)	1.20 ±0.01 30-60°	—	C. Kovanda.

Table 2. Geological setting of heat flow holes, western Trans-Pecos Texas.

Hole no.	Location	Geological description	Use of hole
UTEP-1	UTEP campus, El Paso	Tertiary andesite porphyry	Heat flow measurement
HT-13	Hueco Tanks area, El Paso Co.	Bolson fill; Pennsylvanian cherty limestone	Geothermal exploration (heat flow)
PSH-1	Pump Station Hills, Hudspeth Co.	Precambrian rhyolite	Heat flow measurement
FM-1	Finlay Mountains, Hudspeth Co.	Tertiary diorite	Mineral exploration
VHC-1	Van Horn Airport, Culberson Co.	Quaternary bolson fill	Water supply well
V-3	Southwest Farms, Valentine, Jeff Davis Co.	Bolson fill; Tertiary volcanics (basic)	Irrigation well

on a divided-bar apparatus (Roy and others, 1968), on samples of core or cuttings obtained from the boreholes, the latter using the technique of Sass and others (1971). Topographic corrections were applied to the geothermal gradients where necessary; that is, where severe terrain variability in the vicinity of the borehole would have made the gradient in error.

DISCUSSION

A marked trend of high heat flow appears at the eastern margin of the Hueco Bolson in El Paso and Hudspeth Counties, where the stable (1.0-1.1 H.F.U. heat flow) Diablo Plateau adjoins the Rio Grande Valley. This "high" is consistent with that shown in the heat flow contour maps of Reiter and others (1975) and Swanberg and Morgan (1978) in the Tularosa (Hueco) Basin of southern New Mexico. The value of 8.3 H.F.U. was obtained during the investigation of a potential geothermal area to the east of El Paso, where it appears that thermal waters are rising along a fault zone at the edge of the Hueco Bolson. To the west of this, the figure for El Paso suggests a return to a more normal Basin and Range heat flow (2.0 H.F.U.).

Thermal waters are encountered to the south at several places either as hot springs or in wells (Dorfman and Kehle, 1974), all within a few kilometers of the Rio Grande. Temperature gradient measurements made in the five westernmost counties (Taylor and others, 1979) indicated elevated gradients in the river zone, and this is substantiated by the heat flow contours of Figure 1.

Tectonic trends in West Texas are reflected by the heat flow map. The change in direction of the Rio Grande at about 30°35'N (near Indian Hot Springs) follows the Cenozoic faulting (Muehlberger and others, 1978) of the region, and the heat flow contours make an inflection in this same area, in the vicinity of Van Horn. An inflection is also tentatively proposed here by Swanberg (1979), based on heat flow data estimated from silica geothermometry.

Reilinger and others (1980) have noted evidence for as much as 19 cm of tectonic uplift in the Diablo Plateau and have proposed intracrustal magmatism or preseismic deformation to account for this. Also noted is subsidence in the Salt Basin, at the eastern edge of the uplifted area. If this results from recent or ongoing regional extension, as suggested by Quaternary fault scarps (Muehlberger and others, 1978) and is thus a possible zone of incipient rifting (see Veldhuis and Keller, this guidebook), it has, as yet, no thermal signature, as the heat flow is only 1.0-1.1 H.F.U. However, as the observed crustal movement occurred in less than 50 years, it

would take many times longer than this for any associated thermal wave to reach the surface. Cook and others (1979) have shown that the present heat flow in the southern Rio Grande rift can be explained by a thermal history of at least 30 m.y. in the crust and upper mantle.

The high heat flow of the Rio Grande rift in southern New Mexico and part of West Texas (Decker and Smithson, 1975) has been modelled by invoking crustal thinning due to an unwarped of abnormally hot mantle material (at between 30 and 45 km depth), with shallow crustal intrusions causing local anomalies. Work by Pedersen and Hermance (1976) using geo-electromagnetic soundings has defined a region of low electrical resistivity beneath El Paso, starting at about 30 km depth, and this is consistent with the interpretations of Decker and Smithson (1975). A seismic refraction profile in southern New Mexico (Cook and others, 1979) also suggests the existence of anomalous material at this depth. The configuration of the anomalous crustal zone may need modification in the light of the new heat flow data and apparent tectonic activity in the Diablo Plateau-Salt Basin graben region.

ACKNOWLEDGMENTS

Part of this work has been funded by a grant from the Texas Energy Advisory Council. Thanks are due particularly to those people listed in Table 1, who were kind enough to allow access to their land and use of borehole samples.

REFERENCES

- Cook, F. A., McCullar, D. B., Decker, E. R. and Smithson, S. B., 1979, Crustal structure and evolution of the southern Rio Grande rift, in Riecker, R. E., ed., Rio Grande rift: tectonics and magmatism: American Geophysical Union, Washington, p. 195-208.
- Decker, E. R. and Smithson, S. B., 1975, Heat flow and gravity interpretation across the Rio Grande rift in southern New Mexico and West Texas: *Journal of Geophysical Research*, v. 80, p. 2542-2552.
- Dorfman, M. and Kehle, R. O., 1974, Potential geothermal resources of Texas: Geological Circular 74-4, Texas Bureau of Economic Geology, 33 p.
- Herrin, E. and Clark, S. P., 1956, Heat flow in West Texas and eastern New Mexico: *Geophysics*, v. 21, p. 1087-1099.
- Muehlberger, W. R., Belcher, R. C. and Goetz, L. K., 1978, Quaternary faulting in Trans-Pecos Texas: *Geology*, v. 6, p. 337-340.
- Pedersen, J. and Hermance, J. F., 1976, Towards resolving the absence or presence of an active magma chamber under the southern Rio Grande rift zone (abs.): *EOS Transactions American Geophysical Union*, v. 57, p. 1014.

Reilinger, R., Brown, L. and Powers, D., 1980, New evidence for tectonic uplift in the Diablo Plateau region, West Texas: *Geophysical Research Letters*, v. 7, p. 181-184.

Reiter, M., Edwards, C. L., Hartman, H. and Weidman, C., 1975, Terrestrial heat flow along the Rio Grande rift, New Mexico and southern Colorado: *Geological Society of America Bulletin*, v. 86, p. 811-818.

Roy, R. F., Decker, E. R., Blackwell, D. D. and Birch, F., 1968, Heat flow in the United States: *Journal of Geophysical Research*, v. 73, p. 5207-5221.

Sass, J. H., Lachenbruch, A. H. and Munroe, R. J., 1971, Thermal conductivity of rocks from measurements on fragments and its application to heat-flow determinations: *Journal of Geophysical Research*, v. 76, p. 3391-3401.

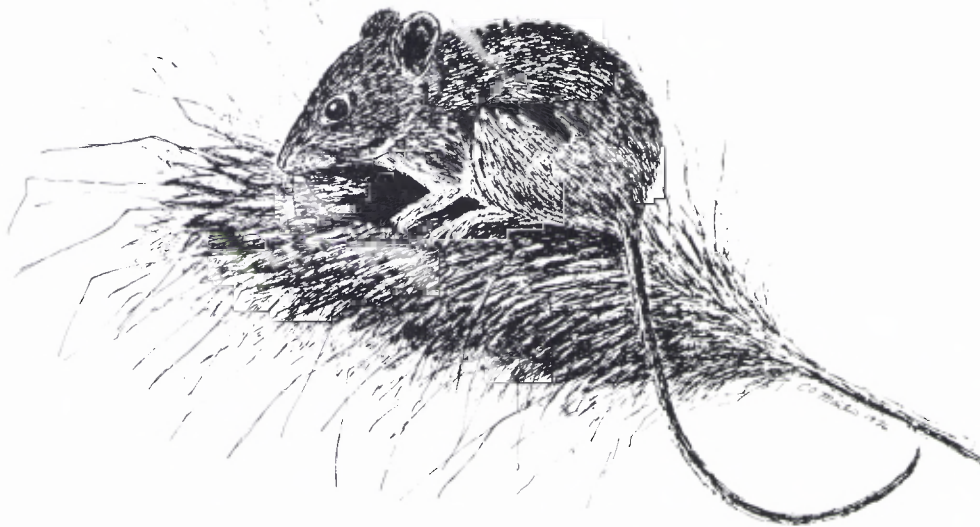
Smith, D. L. and Jones, R. L., 1979, Thermal anomaly in northern Mexico: an extension of the Rio Grande rift, in Riecker, R. E., ed., *Rio Grande rift: tectonics and magmatism*: American Geophysical Union, Washington, p. 269-278.

Swanberg, C. A. and Herrin, E., 1976, Heat flow and geochemical data from West Texas (abs.): *EOS Transactions American Geophysical Union*, v. 57, p. 1009.

Swanberg, C. A. and Morgan, P., 1978, The linear relationship between temperatures based on the silica geothermometer and heat flow; a new heat flow map of the United States, *Pure and Applied Geophysics*, v. 117, p. 227-241.

Swanberg, C. A., 1979, Chemistry of thermal and nonthermal groundwaters in the Rio Grande rift and adjacent tectonic provinces, in Riecker, R. E., ed., *Rio Grande rift: tectonics and magmatism*: American Geophysical Union, Washington, p. 279-288.

Taylor, B., Roy, R. F. and Keller, G. R., 1979, Geothermics in Trans-Pecos Texas: preliminary findings: *Geothermal Resources Council, Transactions*, v. 3, p. 713-715.



Fulvous harvest mouse, *Reithrodontomys fulvescens*.



Downy brome plant and spikelet, *Bromus tectorum*.